



Modular belt

520 M

M A G N E T I C S Y S T E M

Movex[®]

P R O D U C T U P D A T E

520 M

Modular Belt Series 520 M, H=8,7 K330



Delivery: **Easy** Standard

Pitch.: 12,7 mm | Backflex radius min.: 15 mm

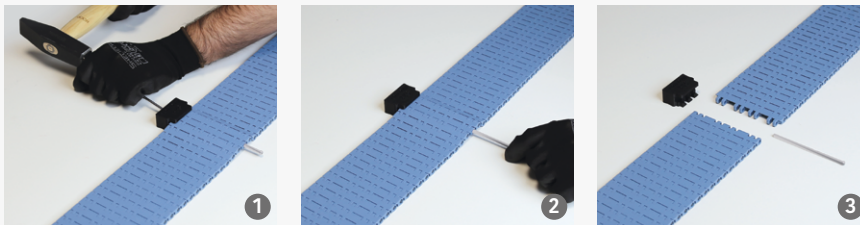


Pin Sphere[®] • Easier installation
 AUTOLOCK • Quicker maintenance
 • Metal pin



Perfectly interchangeable with previous design!

Assembly/Disassembly

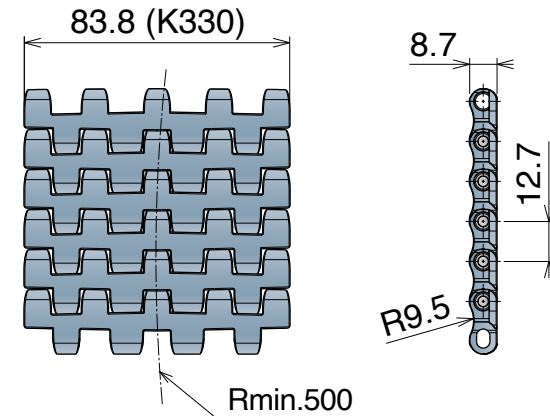


MOVEX TOOL
520M SERIES

Art. Nr. **29968**

Try using the specific tool for 520 M developed to facilitate belt assembly and disassembly.

Version A - Standard



Part	Article-Nr.	Ref.	Weight	*Material
1193	1195019330	LFA 520 M K330	1,11	LFA
1193	1195039330	MX 520 M K330	1,11	MX
1193	1195309330	PFX 520 M K330	1,11	PFX NEW

10 feet
 3.048 m
 240 links

*Material

LFA - Code 01
 Low friction Acetal

Max w. load: 2.500 N
 Weight: 7,5 kg/m²
 Temp. range dry: -40+120 °C
 Temp. range wet: -40+60 °C
 Pin material: Ferritic stainless steel

MX - Code 03
 Performance PBT

Max w. load: 2.000 N
 Weight: 7,2 kg/m²
 Temp. range dry: -40+120 °C
 Temp. range wet: -40+60 °C
 Pin material: Ferritic stainless steel

PFX - Code 30
 Extra performance PBT

Max w. load: 2.000 N
 Weight: 7,2 kg/m²
 Temp. range dry: -40+120 °C
 Temp. range wet: -40+60 °C
 Pin material: Ferritic stainless steel

Movex[®]

www.movexii.com

PRODUCT UPDATE