



522 HD

One-track & Modular Belt

Movex[®]

www.movexii.com

522 HD

One-track & modular belt



High working load

Longer expected service life.



High speed

With reinforced central hinge.



Low noise

With improved sprockets engagement.



Maintenance free

With ease pin removal and no clip.



Wide range available

One track and modular belts.



PFX availability

Extra performance PBT to minimize wear.

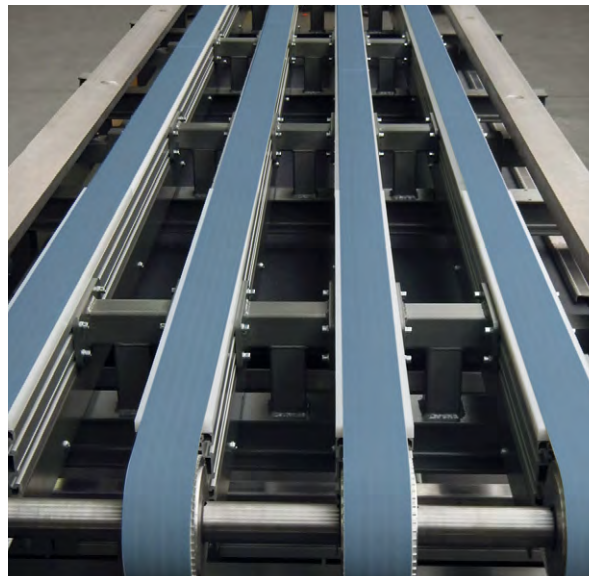
The best choice for packaging machinery!

The new **Movex® 522 HD** Flat Top one-track & modular belt is the perfect solution for any type of packaging machinery, from food to beverage industries as well as all the other consumer goods.

The wide range of One-Track belts (6 different widths) is ideal also for folding and gluing machinery, thanks to the high-speed capacity, it generates low noise and vibration, it results quick in maintenance and is a perfect combination of reduced transfers and high working loads.

Available versions with positioners assure a correct guidance, minimize side-movements and improve the machine performance.

Available materials are Low Friction Acetal, MX Performance PBT and PFX Extra Performance PBT, able to minimize coefficient of friction and wear over carried products.





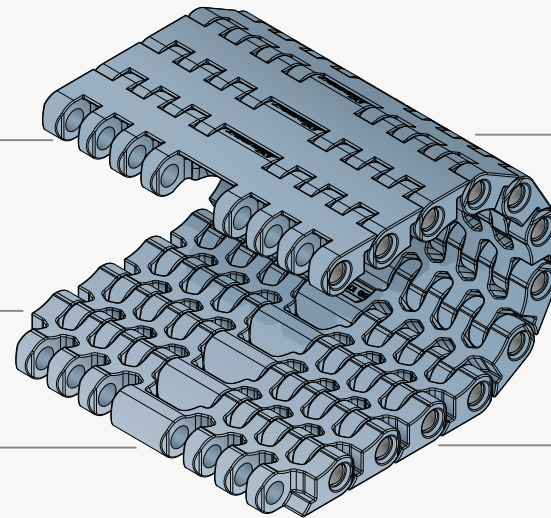
Description and Features



Reinforced radial hinge to ensure the highest levels of performance.

Quick maintenance thanks to the design developed.

Customizable belt material and color.



Smooth surface to avoid risk of product damaging.

Reduced wear strip friction.

Easy pin assembling system (Patented).

General products features

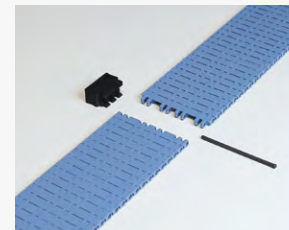
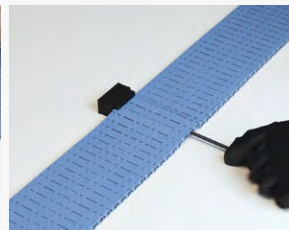
Belt pitch 12,7 mm (0.50")

Thickness 8,7 mm (0.34")

Back flex radius 10 mm (0.39")

Increments 50 mm (1.97")

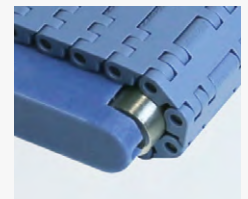
Quickest maintenance with Installation tool



Transfer plate available



STANDARD

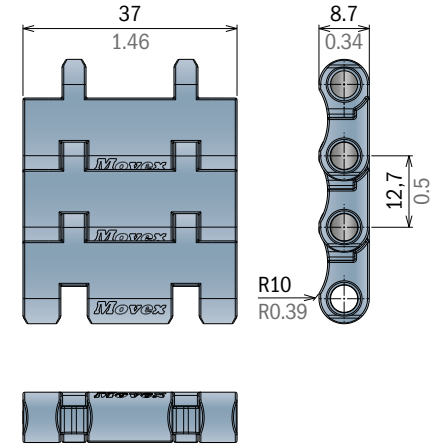
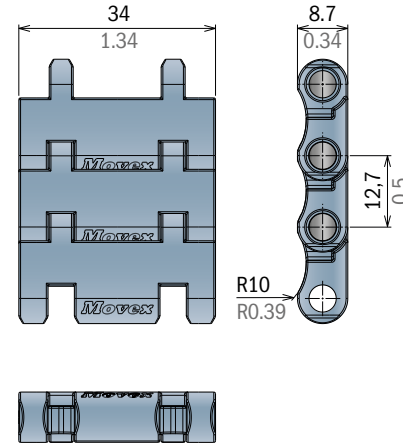
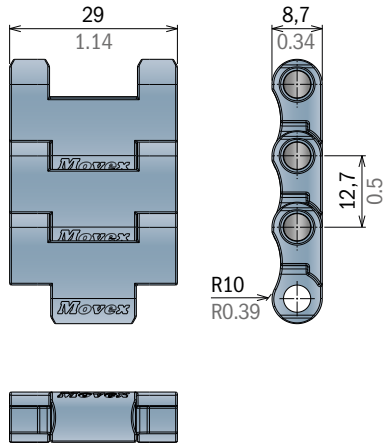


WITH ROLLERS



One-track - Standard

Back flex radius: 10 mm (0.39")



Series	*Material	Width	Version
5271	*	9115	A

Max working load: LFA 600 N (166 lbs)
MX and PFX 450 N (130 lbs)

Series	*Material	Width	Version
5271	*	9134	A

Max working load: LFA 870 N (195 lbs)
MX and PFX 680 N (153 lbs)

Series	*Material	Width	Version
5271	*	9145	A

Max working load: LFA 945 N (212 lbs)
MX and PFX 740 N (166 lbs)

INSTALLATION TOOL



Art Nr.

29971

Perfectly compatible with all 522 HD One-Track belt versions.

*Material

LFA - Code 01

Low friction Acetal

Weight: 7,8 Kg/m² (1.59 lbs/ft²)
Temp. range dry: -40÷80 °C (-40÷176°F)
Temp. range wet: -40÷65 °C (-40÷149°F)
Pin material: PBT white

MX - Code 03

Performance PBT

Weight: 7,5 Kg/m² (1.53 lbs/ft²)
Temp. range dry: -40÷120 °C (-40÷176°F)
Temp. range wet: -40÷60 °C (-40÷149°F)
Pin material: POM grey

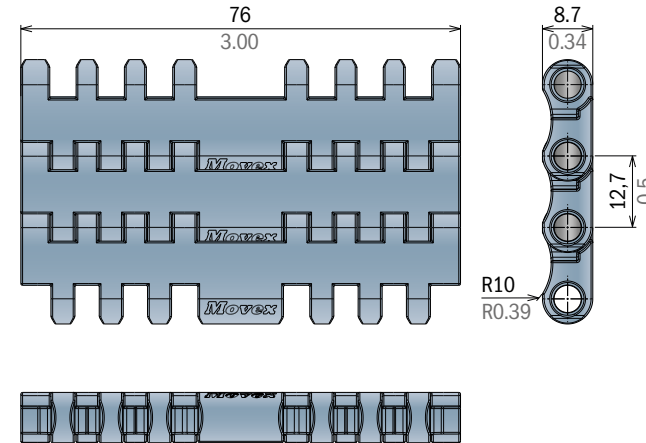
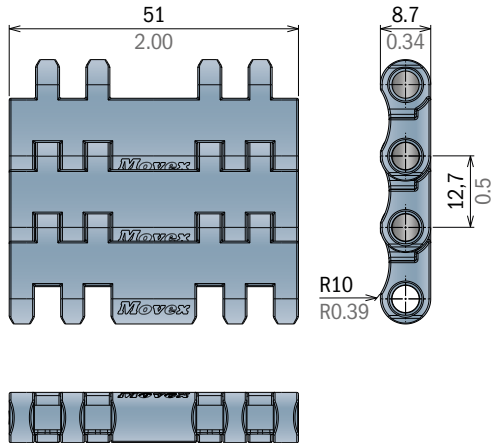
PFX - Code 30

Extra performance PBT

Weight: 7,5 Kg/m² (1.53 lbs/ft²)
Temp. range dry: -40÷120 °C (-40÷176°F)
Temp. range wet: -40÷60 °C (-40÷149°F)
Pin material: POM grey

One-track - Standard

Back flex radius: 10 mm (0.39")



Series	*Material	Width	Version
5271	*	9200	A

Max working load: LFA 1.300 N (292 lbs)
MX and PFX 1.020 N (229 lbs)

Series	*Material	Width	Version
5271	*	9300	A

Max working load: LFA 2.000 N (450 lbs)
MX and PFX 1.520 N (341 lbs)

INSTALLATION TOOL



Art Nr.
29971

Perfectly compatible with all 522 HD One-Track belt versions.

*Material

LFA - Code 01 Low friction Acetal

Weight: 7,8 Kg/m² (1.59 lbs/ft²)
Temp. range dry: -40÷80 °C (-40÷176°F)
Temp. range wet: -40÷65 °C (-40÷149°F)
Pin material: PBT white

MX - Code 03 Performance PBT

Weight: 7,5 Kg/m² (1.53 lbs/ft²)
Temp. range dry: -40÷120 °C (-40÷176°F)
Temp. range wet: -40÷60 °C (-40÷149°F)
Pin material: POM grey

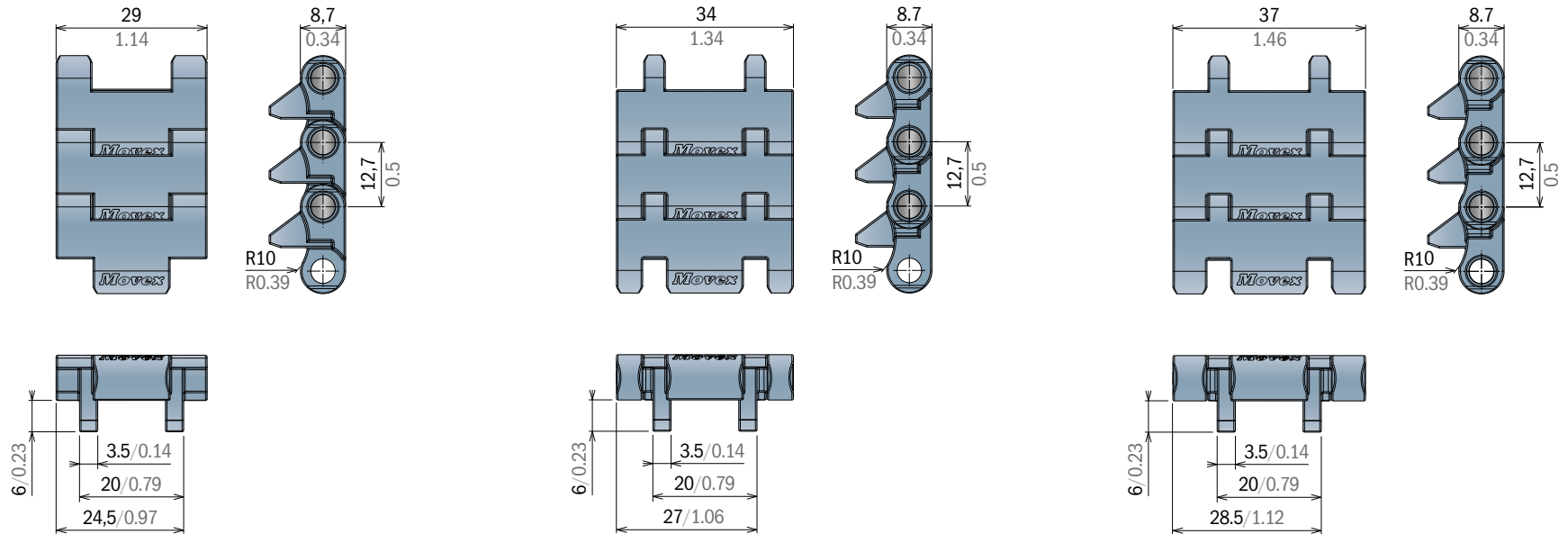
PFX - Code 30 Extra performance PBT

Weight: 7,5 Kg/m² (1.53 lbs/ft²)
Temp. range dry: -40÷120 °C (-40÷176°F)
Temp. range wet: -40÷60 °C (-40÷149°F)
Pin material: POM grey



One-track with two positioners

Back flex radius: 10 mm (0.39")



Series	*Material	Width	Version
5271	*	9115	C

Max working load: LFA 600 N (166 lbs)
MX and PFX 450 N (130 lbs)

Series	*Material	Width	Version
5271	*	9134	C

Max working load: LFA 870 N (195 lbs)
MX and PFX 680 N (153 lbs)

Series	*Material	Width	Version
5271	*	9145	C

Max working load: LFA 945 N (212 lbs)
MX and PFX 740 N (166 lbs)

INSTALLATION TOOL



Art Nr.

29971

Perfectly compatible with all 522 HD One-Track belt versions.

*Material

LFA - Code 01

Low friction Acetal

Weight: 7,8 Kg/m² (1.59 lbs/ft²)
Temp. range dry: -40÷80 °C (-40÷176°F)
Temp. range wet: -40÷65 °C (-40÷149°F)
Pin material: PBT white

MX - Code 03

Performance PBT

Weight: 7,5 Kg/m² (1.53 lbs/ft²)
Temp. range dry: -40÷120 °C (-40÷176°F)
Temp. range wet: -40÷60 °C (-40÷149°F)
Pin material: POM grey

PFX - Code 30

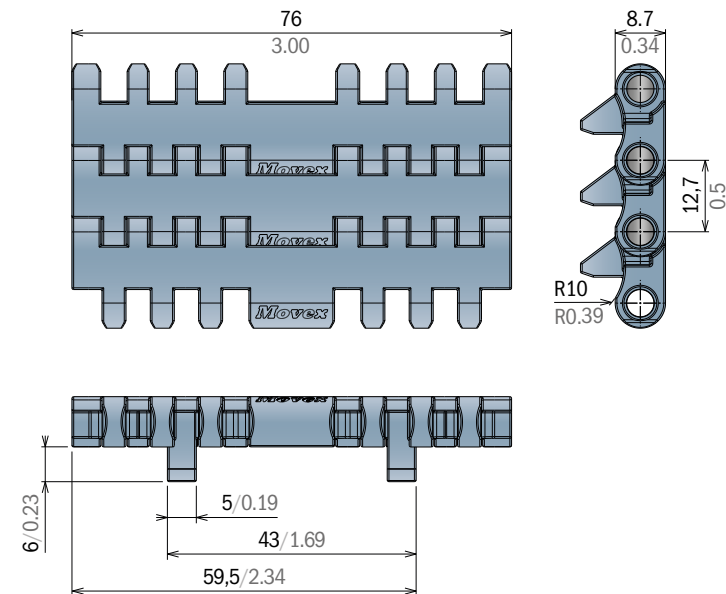
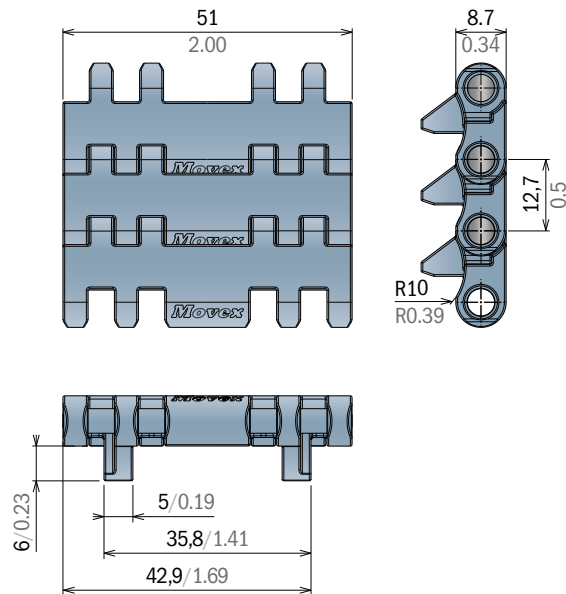
Extra performance PBT

Weight: 7,5 Kg/m² (1.53 lbs/ft²)
Temp. range dry: -40÷120 °C (-40÷176°F)
Temp. range wet: -40÷60 °C (-40÷149°F)
Pin material: POM grey

One-track with two positioners



Back flex radius: 10 mm (0.39")



Series	*Material	Width	Version
5271	*	9200	C

Max working load: LFA 1.300 N (292 lbs)
MX and PFX 1.020 N (229 lbs)

Series	*Material	Width	Version
5271	*	9300	C

Max working load: LFA 2.000 N (450 lbs)
MX and PFX 1.520 N (341 lbs)

INSTALLATION TOOL



Art Nr.
29971

Perfectly compatible with all 522 HD One-Track belt versions.

*Material

LFA - Code 01 Low friction Acetal

Weight: 7,8 Kg/m² (1.59 lbs/ft²)
Temp. range dry: -40÷80 °C (-40÷176°F)
Temp. range wet: -40÷65 °C (-40÷149°F)
Pin material: PBT white

MX - Code 03 Performance PBT

Weight: 7,5 Kg/m² (1.53 lbs/ft²)
Temp. range dry: -40÷120 °C (-40÷176°F)
Temp. range wet: -40÷60 °C (-40÷149°F)
Pin material: POM grey

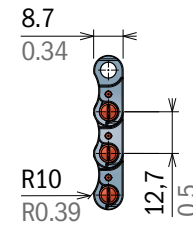
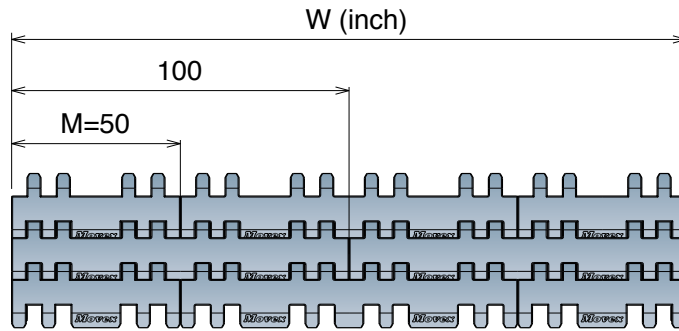
PFX - Code 30 Extra performance PBT

Weight: 7,5 Kg/m² (1.53 lbs/ft²)
Temp. range dry: -40÷120 °C (-40÷176°F)
Temp. range wet: -40÷60 °C (-40÷149°F)
Pin material: POM grey



Modular belt - Version A and C

Back flex radius: 10 mm (0.39") | Wider belts available on request



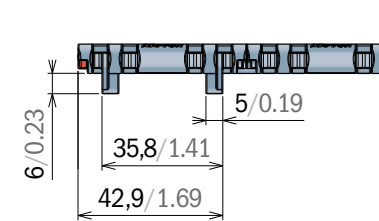
Series	*Material	Width	Version
5271	*	0100**	A or C
5271	*	0150	A or C
5271	*	0200	A or C
5271	*	0250	A or C
5271	*	0300	A or C

** Belt assembled with self locking pin.

Version A - STANDARD



Version C - WITH POSITIONERS



*Material

LFA - Code 01

Low friction Acetal

Max working load: 25.500 N/m (1.745 lbs/ft)
 Weight: 7,8 Kg/m² (1.59 lbs/ft²)
 Temp. range dry: -40÷80 °C (-40÷176°F)
 Temp. range wet: -40÷65 °C (-40÷149°F)
 Pin material: PBT white

MX - Code 03

Performance PBT

Max working load: 20.000 N/m (1.368 lbs/ft)
 Weight: 7,5 Kg/m² (1.53 lbs/ft²)
 Temp. range dry: -40÷120 °C (-40÷176°F)
 Temp. range wet: -40÷60 °C (-40÷149°F)
 Pin material: POM grey

PFX - Code 30

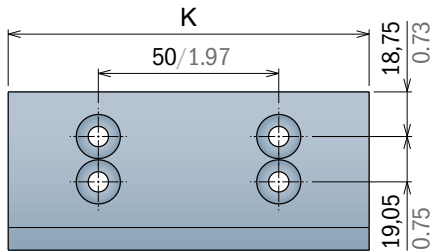
Extra performance PBT

Max working load: 20.000 N/m (1.368 lbs/ft)
 Weight: 7,5 Kg/m² (1.53 lbs/ft²)
 Temp. range dry: -40÷120 °C (-40÷176°F)
 Temp. range wet: -40÷60 °C (-40÷149°F)
 Pin material: POM grey

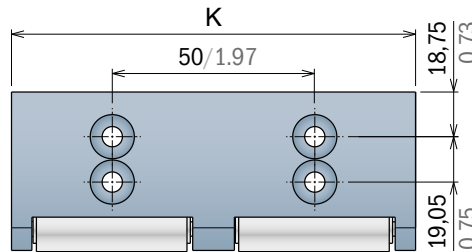
Transfer plate

Find out the complete transfer plate range on our product catalog | All the transfer plate are available in different widths on request

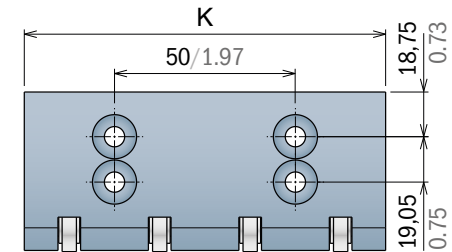
STANDARD



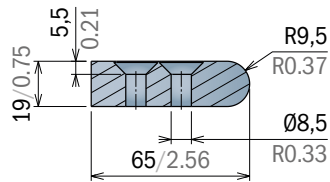
ROLLERS



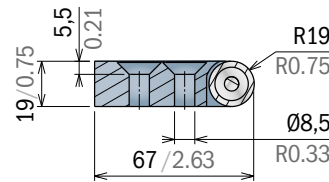
BEARINGS



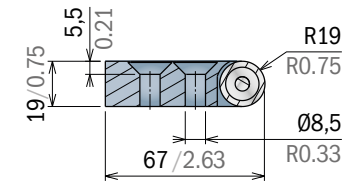
Art.-Nr.	K
22820	29 (1.14")
22821	34 (1.34")
22822	37 (1.46")
22823	51 (2.00")
22808	76 (3.00")
22824	100 (3.94")



Art.-Nr.	K
22823B	51 (2.00")
22808B	76 (3.00")
22824C	100 (3.94")



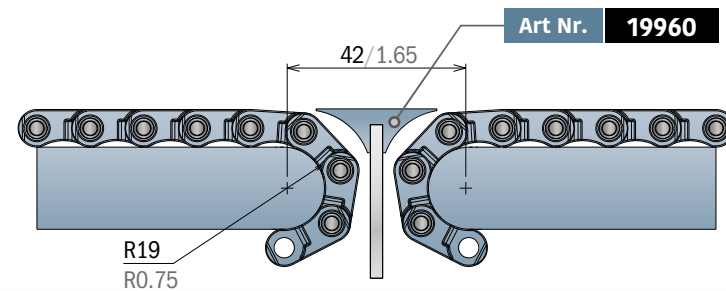
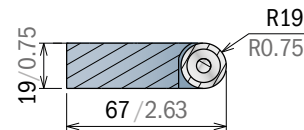
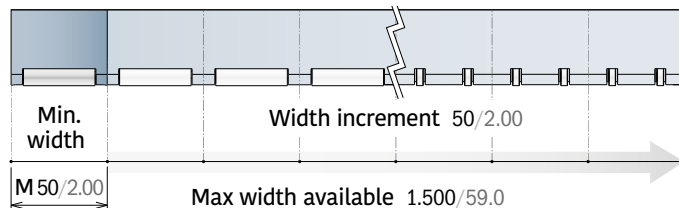
Art.-Nr.	K
22850	29 (1.14")
22851	34 (1.34")
22852	37 (1.46")
22853	51 (2.00")
22861	76 (3.00")
22854	100 (3.94")



ONE PIECE

Single piece

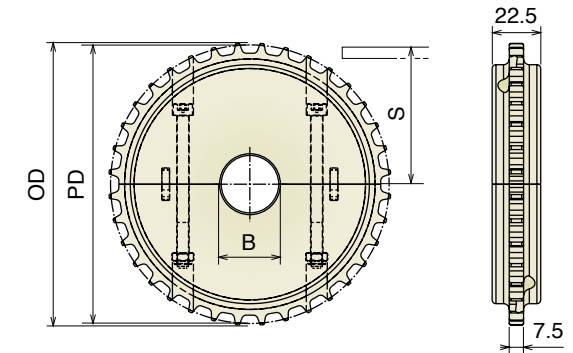
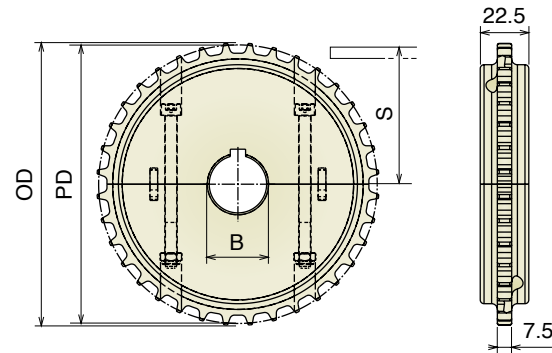
The One piece patent, minimise the time necessary for the maintenance and allow the possibility to create a "one-piece", easy to clean and guarantee for a greater hygiene.



Material: Made in *BluLub* - Rollers & Bearings made in Stainless steel.

Sprockets available

- Optimized hygenic
- Quick replacement



Art-Nr.	Z-	Bore	PD	OD	S
156101	28	25	113,4	115,4	52,4
156102		30			
156103		35			
156104		40			
156106		25* 25	□		
156107		30* 30	□		
156108		40* 40	□		
156201	36	25	145,7	147,7	68,5
156202		30			
156203		35			
156204		40			
156206		25* 25	□		
156207		30* 30	□		
156208		40* 40	□		
156301	38	25	153,8	155,8	72,6
156302		30			
156303		35			
156304		40			
156306		25* 25	□		
156307		30* 30	□		
156308		40* 40	□		
156401	40	25	161,9	163,8	76,6
156402		30			
156403		35			
156404		40			
156406		25* 25	□		
156407		30* 30	□		
156408		40* 40	□		

Art-Nr.	Z-	Bore	PD	OD	S
156150	28	18*	113,4	115,4	52,4
156151		25			
156152		30			
156153		35			
156154		40			
156250	36	18*	145,7	147,7	68,5
156251		25			
156252		30			
156253		35			
156254		40			
156350	38	18*	153,8	155,8	72,6
156351		25			
156352		30			
156353		35			
156354		40			
156450	40	18*	161,9	163,8	76,6
156451		25			
156452		30			
156453		35			
156454		40			

*Plain Bore

522 HD

Split drive sprocket and
Split idler sprocket.

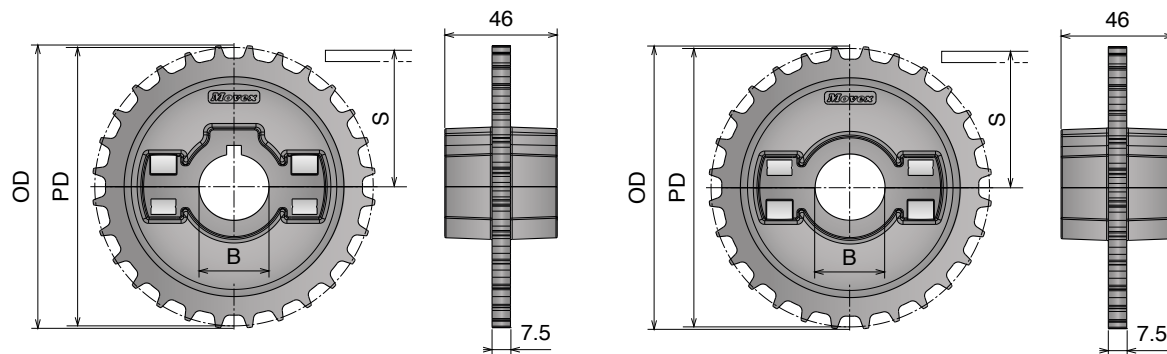
Machined

Dimensions expressed in millimeter

⚙️ **Material:** Polyamide
Screws: Stainless steel Nuts: zinc plated steel

Sprockets available

- Easy clean and installation
- Heavy duty design



Art-Nr.	Z-	Bore	PD	OD	S
163001	24	25	97,3	99,3	44,3
163002		30			
163003		35			
163004		40			
163006		25* 25	□		
163007		30* 30	□		
163008		40* 40	□		
163101	28	25	113,4	115,4	52,4
163102		30			
163103		35			
163104		40			
163106		25* 25	□		
163107		30* 30	□		
163108		40* 40	□		
163201	36	25	145,7	147,7	68,5
163202		30			
163203		35			
163204		40			
163206		25* 25	□		
163207		30* 30	□		
163208		40* 40	□		

Art-Nr.	Z-	Bore	PD	OD	S
163051	24	25	97,3	99,3	44,3
163052		30			
163053		35			
163054		40			
163151	28	25	113,4	115,4	52,4
163152		30			
163153		35			
163154		40			
163251	36	25	145,7	147,7	68,5
163252		30			
163253		35			
163254		40			

*Plain Bore

522 HD

Split drive sprocket and
Split idler sprocket.

Molded

Dimensions expressed in millimeter

⚙️ **Material:** Reinforced polyamide
Screws: Stainless steel Nuts: zinc plated steel

Movex[®]

Movex around the world

Movex GmbH

P +49-6204-9375-0

Movex Brasil Ltda

P +55-15-3141-2550

Movex France

P +39-335-8085980

Movex AG India

P +91-120-4159660-62

Movex Russia

P +7 (495) 925-88-56

Movex UK Ltd.

P +44-77-20678442

Movex Nederland

P +31-630-994850

Movex USA Inc.

P +1-919-274-5477

Movex SA de CV

P +52-1-331845818

Movex CIS countries

P +380-667507756

Movex S.p.A.

Headquarter

Viale Industria, 22 - 24060
Castelli Calepio (BG) Italy

Logistics center

Via Repubblica, 25 - 24060
Castelli Calepio (BG) Italy