

MX

Exceeding performances

Movex[®]

www.movexii.com

MX

Exceeding performances



High strength

Increased strength up to 20% compared to the competition.



Dry Running

Ideal to dry run (without lubrication) with glass and cans.



Scratch resistant

Deeply tested to guarantee an optimal resistance to scratches and marks.



Low friction

Developed to reduce friction between chain and product, and chain and wearstrip.



Food contact Certified

MX material is suitable in food application.



Minimal dusting

Incredible reduced dusting under dry conditions with glass and cans.

The best choice for dry running applications.

Movex® MX is an exclusive performance PBT material. More than 1.500 modular belt types and more than 200 plastic chain types are available in **Movex® MX**. The ideal material to improve your line performances and to cover any different type of food and beverage application, with challenging performances.

Its special characteristics are, for example, the very low coefficient of friction in combination with dusting minimization, especially when used with glass and cans.

Movex® MX is the right choice to have a top-performance dry running conveyor line, with an improved total cost of ownership and an important reduction of energy consumption. Make your environment safer and cleaner, try **MX** material and forget about the traditional solutions.





Description and Features

Description

Performance PBT (with additives)
with a very low coefficient of friction and improved wear resistance.
Recommended for high speed and dry running applications.



Colour: Dark grey
Primary Components: PBT

Friction factors between MX and Wearstrip material

Lubrication	Stainless steel	UHMW-PE & PA	BluLub®
Dry	0,20	0,16	0,13
Water	0,17	0,11	0,09
W&S/Dry lube	0,14	0,09	0,08
Oil	0,10	0,10	0,10

Allowable application temperatures

Temperatures - Fahrenheit / Celsius		
Min.	Max.	
Dry & Wet	Dry	Wet
-40°F/-40°C	248°F/120°C	140°F/60°C

Friction factors between MX and Product material

Lubrication	Paper & carton	Metal (steel)	Aluminium	Plastics & PET	Glass (returnable)	Glass (new)
Dry	0,20	0,18	0,15	0,13	0,14	0,12
Water	n.a.	0,16	0,14	0,12	0,13	0,12
W&S/Dry lube	n.a.	0,13	0,12	0,10	0,11	0,10
Oil	n.a.	0,10	n.a.	n.a.	n.a.	n.a.

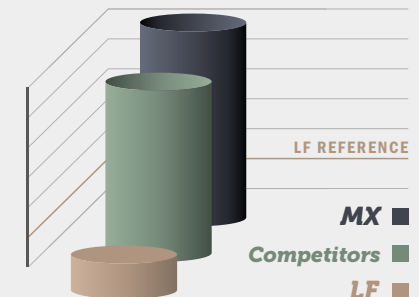


Aluminum can - Competition material



Aluminum can - MX material

Wear resistance RELATIVE TO LF = 100%



Example with cans UHMWPE chain guides 90° side-flexing conveyor under accumulation, running dry conditions.

Note: Material properties and performance of final product are subject to variation according to operating conditions, e.g. environmental conditions, chemicals, cleanliness.

Product range

820 FT

Article-Nr.	Plate Width mm	Weight kg/m	Max working load N
11010302	82,5	0,89	1260
11010303	83,8	0,90	
11010304	88,9	0,91	
11010314	101,6	0,95	
11010305	114,3	1,00	
11010306	152,4	1,22	
11010307	190,5	1,43	



828 FT

Article-Nr.	Plate Width mm	Weight kg/m	Max working load N
11020302	82,5	1,07	1860
11020303	83,8	1,13	



Backflex radius min.: 50 mm

831 FT

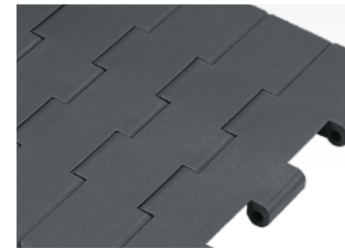
Article-Nr.	Plate Width mm	Weight kg/m	Max working load N
11030302	82,5	1,00	1260
11030305	114,3	1,28	
11030307	190,5	1,80	



Backflex radius min.: 50 mm

821 FT

Article-Nr.	Plate Width mm	Weight kg/m	Max working load N
11040307	190,5	2,55	2200
11040308	254,0	3,05	
11040309	304,8	3,35	



Backflex radius min.: 50 mm

821 GT

Article-Nr.	Plate Width mm	Weight kg/m	Max working load N
11050307	190,5	2,55	2200
11050308	254,0	3,05	
11050309	304,8	3,35	



TPE rubber: 50 ShA

Backflex radius min.: 50 mm

8257 FT

Article-Nr.	Plate Width mm	Weight kg/m	Max working load N
11070307	190,5	2,55	3050
11070308	254,0	3,05	
11070309	304,8	3,35	




Backflex radius min.: 50 mm

Please contact us if you require further information about the products available | Other different types of product in MX are on request

Product range

878 TAB


Article-Nr.	Plate Width mm	Weight kg/m	Max working load N
11190302	82,5	1,06	1750
11190305	114,3	1,18	



Side flex radius min.: 190 mm
Backflex radius min.: 50 mm

879 M


Article-Nr.	Plate Width mm	Weight kg/m	Max working load N
11240302	82,5	1,05	1750
11240305	114,3	1,15	



Side flex radius min.: 457 mm
Backflex radius min.: 50 mm

879 TAB


Article-Nr.	Plate Width mm	Weight kg/m	Max working load N
11250302	82,5	1,01	1750
11250305	114,3	1,13	



Side flex radius min.: 457 mm
Backflex radius min.: 50 mm

880 M


Article-Nr.	Plate Width mm	Weight kg/m	Max working load N
11100302	82,5	1,05	1750
11100303	83,8	1,09	
11100305	114,3	1,15	



Side flex radius min.: 457 mm
Backflex radius min.: 50 mm

880 TAB


Article-Nr.	Plate Width mm	Weight kg/m	Max working load N
11110302	82,5	1,015	1750
11110303	83,8	1,018	
11110305	114,3	1,09	



Side flex radius min.: 457 mm
Backflex radius min.: 40 mm

880 TAB BO

Article-Nr.	Plate Width mm	Weight kg/m	Max working load N
11260302	82,5	0,96	1350
11260305	114,3	1,10	



Side flex radius min.: 190 mm
Backflex radius min.: 40 mm

Please contact us if you require further information about the products available | Other different types of product in MX are on request

Product range

882 M



Article-Nr.	Plate Width mm	Weight kg/m	Max working load N
11130307	190,5	2,14	3050
11130308	254,0	2,45	
11130309	304,8	2,68	

Side flex radius min.: 610 mm

Backflex radius min.: 50 mm

882 TAB



Article-Nr.	Plate Width mm	Weight kg/m	Max working load N
11140305	114,3	2,05	3050
11140306	152,4	2,20	
11140307	190,5	2,45	
11140308	254,0	2,85	
11140309	304,8	3,40	

Also available GT version.

Side flex radius min.: 610 mm | Backflex radius min.: 40 mm

1873 FT



Article-Nr. with SS chain	Plate Width mm	Weight kg/m	Max working load N
11600302	82,5	2,10	3500
11600305	114,3	2,30	
11600306	152,4	2,40	
11600307	190,5	2,60	
11600308	254,0	2,80	
11600309	304,8	3,00	

Also available with C45 chain | Side flex radius min.: 355/457 mm

Backflex radius min.: 180 mm

1873 GRIPPER GS1



Article-Nr. with SS chain	Plate Width mm	Weight kg/m	Max working load N
11320302	82,5	4,354	4500
11320305	114,3	4,945	

Also available with Nickel plated steel & C45 chain and other two types of rubber shapes GS2 & GS4.

Rubber.: Red TPR material

Backflex radius min.: 150 mm

1873 D-SHAPE



Article-Nr. with SS chain	Plate Width mm	Weight kg/m	Max working load N
11880306	152,4	4,00	3500
11880307	190,5	4,90	

Also available with Nickel plated steel & C45 chain.

Rubber.: Red TPR material

Side flex radius min.: 610 mm

Backflex radius min.: 200 mm

1873 MX1



Article-Nr. with SS chain	Plate Width mm	Weight kg/m	Max working load N
11690308	254,0	2,80	3500

Also available with Nickel plated steel & C45 chain.

Rubber: Green TPE material - 85 ShA

Side flex radius min.: 457 mm

Backflex radius min.: 200 mm

Please contact us if you require further information about the products available | Other different types of product in MX are on request

Product range

1873 MX2



Article-Nr. with SS chain	Plate Width mm	Weight kg/m	Max working load N
11670307	190,5	2,60	3500

Also available with Nickel plated steel & C45 chain.

Rubber: Green TPE material - 75 ShA

Side flex radius min.: 457 mm

Backflex radius min.: 200 mm

1843 FT



Article-Nr. with SS chain	Plate Width mm	Weight kg/m	Max working load N
11410317	31,8	0,74	1900
11410319	50,8	0,89	

Also available with C45 chain.

Side flex radius min.: 254 mm

Backflex radius min.: 80 mm

CC 600



Article-Nr.	Plate Width mm	Weight kg/m	Max working load N
11220300	42,0	1,35	3200

Also available TAB, D and D TAB versions.

Side flex radius min.: 700 mm

Backflex radius min.: 50 mm

CC 1400



Article-Nr.	Plate Width mm	Weight kg/m	Max working load N
11300300	50,0	3,24	5200

Also available TAB version.

Side flex radius min.: 660 mm

Backflex radius min.: 50 mm

1706 FT



Article-Nr.	Plate Width mm	Weight kg/m	Max working load N
11720300	55,5	1,35	1900

Also available TAB version.

Side flex radius min.: 125 mm

Backflex radius min.: 80 mm

765 NO GAP



Article-Nr.	Plate Width mm	Weight kg/m	Max working load N
11940100	55,0	1,46	2670

Materials: Frame in LFA and plate in MX

Also available with frame in MX and plate in MK.

Side flex radius min.: 125 mm

Backflex radius min.: 50 mm

Please contact us if you require further information about the products available | Other different types of product in MX are on request

Product range

260 M FT



Article-Nr.	Plate Width mm	Weight kg/m	Max working load N
11510303	83,8	1,75	1600
11510305	114,3	2,30	

Side flex radius min.: 500 mm
Backflex radius min.: 240 mm

260 M FG



Article-Nr.	Plate Width mm	Weight kg/m	Max working load N
11540303	83,8	1,62	1600
11540305	114,3	2,13	

Side flex radius min.: 500 mm
Backflex radius min.: 240 mm

260 TAB



Article-Nr.	Plate Width mm	Weight kg/m	Max working load N
11520303	83,8	1,85	1600
11520305	114,3	2,00	

Side flex radius min.: 500 mm
Backflex radius min.: 240 mm

261 M FT



Article-Nr.	Plate Width mm	Weight kg/m	Max working load N
11530303	83,8	2,00	1600
11530305	114,3	2,52	

Side flex radius min.: 500 mm
Backflex radius min.: 240 mm

261 TAB



Article-Nr.	Plate Width mm	Weight kg/m	Max working load N
11900303	83,8	2,00	1600
11900305	114,3	2,52	

Side flex radius min.: 500 mm
Backflex radius min.: 240 mm

510 FT



CODE STRUCTURE

Series	Material	Width	Version
5331	03	See below	A

Standard Width: from 3 to 48 (increments of 3 in)

Version A - Standard

Belts wider than standard are available with 85 mm increments for metric size and 3 in for imperial size | Please contact us if you require further information about the products available

Product range

520 FT

CODE STRUCTURE



Series	Material	Width	Version
5201	03	See below	See below

Standard Width: from 85 to 1530 (increments of 85 mm)

Also available **FTT** version.

Version A - Standard | **Version B** - 1 Positioner

Version C - 2 Positioners

520 HD FT

CODE STRUCTURE



Series	Material	Width	Version
5211	03	See below	See below

Standard Width: from 85 to 680 (increments of 85 mm)

Version A - Standard | **Version B** - 1 Positioner

Version C - 2 Positioners

520 FG

CODE STRUCTURE



Series	Material	Width	Version
5202	03	See below	See below

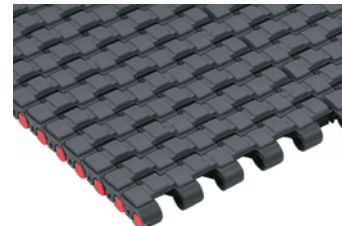
Standard Width: from 85 to 1530 (increments of 85 mm)

Version A - Standard | **Version B** - 1 Positioner

Version C - 2 Positioners

520 GT

CODE STRUCTURE



Series	Material	Width	Version
5203	03	See below	See below

Standard Width: from 85 to 1530 (increments of 85 mm)

Version A - Standard | **Version B** - 1 Positioner

Version C - 2 Positioners

520 M

Article-Nr.	Plate Width mm	Weight kg/m	Max working load N
-------------	-------------------	----------------	-----------------------

1195039330	83,8	1,11	2000
------------	------	------	------

Standard Width: 9330 = 83,8 mm - K330

Side flex radius min.: 500 mm

Backflex radius min.: 15 mm



522 HD FT & One track belt

CODE STRUCTURE



Series	Material	Width	Version
5271	03	See below	See below

Standard Width: from 100 to 300 (increments of 50 mm)

One track version width 29/34/37/51/76 mm

Also available **K450/K750 (521 modular belt series)**

Version A - Standard | **Version C** - 2 Positioners

Belts wider than standard are available with 85 mm increments for metric size and 3 in for imperial size | Please contact us if you require further information about the products available

Product range

590 FT & One track belt

CODE STRUCTURE



Series	Material	Width	Version
5301	03	See below	See below

Standard Width: from 3 to 54 (increments of 3 in)
One track version K325 - K450 - K750

Also available FTT version

Version A - Standard | **Version C** - 2 Positioners

525 HD FT

CODE STRUCTURE



Series	Material	Width	Version
5261	03	See below	See below

Standard Width: from 85 to 1530 (increments of 85 mm)

Also available with RIB and FTT version

Version A - Standard | **Version B** - 1 Positioner

Version C - 2 Positioners

525 HD FG

CODE STRUCTURE



Series	Material	Width	Version
5262	03	See below	See below

Standard Width: from 85 to 1530 (increments of 85 mm)

Version A - Standard | **Version B** - 1 Positioner

Version C - 2 Positioners

525 HD GT & Side indent

CODE STRUCTURE



Series	Material	Width	Version
5263/5265	03	See below	See below

Standard Width: from 85 to 1530 (increments of 85 mm)

Version A - Standard | **Version B** - 1 Positioner

Version C - 2 Positioners

530 FT

CODE STRUCTURE



Series	Material	Width	Version
5321	03	See below	See below

Standard Width: from 3 to 54 (increments of 3 in)

Also available FTT version

Version A - Standard

530 GT & Side indent

CODE STRUCTURE



Series	Material	Width	Version
5223/5325	03	See below	See below

Standard Width: from 3 to 54 (increments of 3 in)

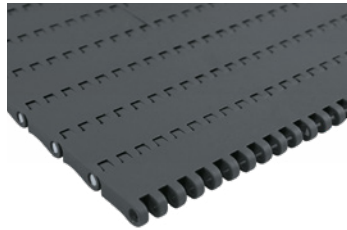
Version A - Standard

Belts wider than standard are available with 85 mm increments for metric size and 3 in for imperial size | Please contact us if you require further information about the products available

Product range

550 FT & One track belt

CODE STRUCTURE



Series	Material	Width	Version
5501/5221	03	See below	See below

Standard Width: from 85 to 1530 (increments of 85 mm)
One track version K330 - K450

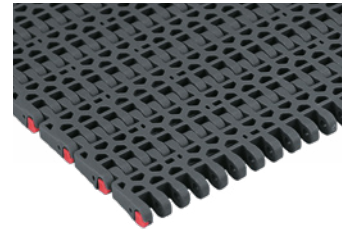
Also available FTT version.

Version A - Standard | **Version B** - 1 Positioner

Version C - 2 Positioners

550 FG & One track belt

CODE STRUCTURE



Series	Material	Width	Version
5222	03	See below	See below

Standard Width: from 85 to 1530 (increments of 85 mm)
One track version K330

Version A - Standard | **Version B** - 1 Positioner

Version C - 2 Positioners

550 GT & Side indent

CODE STRUCTURE



Series	Material	Width	Version
5503/5505	03	See below	See below

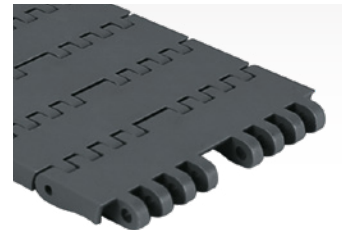
Standard Width: from 85 to 1530 (increments of 85 mm)

Version A - Standard | **Version B** - 1 Positioner

Version C - 2 Positioners

550 PRO FT & M

CODE STRUCTURE



Series	Material	Width	Version
5227/5228	03	9330	See below

Standard Width: 83,8 mm - K330

Version A - Standard | **Version C** - 2 Positioners

551 FT

CODE STRUCTURE



Series	Material	Width	Version
5231	03	See below	See below

Standard Width: from 85 to 1530 (increments of 85 mm)

Also available FTT version

Version A - Standard | **Version B** - 1 Positioner

Version C - 2 Positioners

551 GT & Side indent

CODE STRUCTURE



Series	Material	Width	Version
5233/5235	03	See below	See below

Standard Width: from 85 to 1530 (increments of 85 mm)

Also available with 3 in increments (552 series)

Version A - Standard | **Version B** - 1 Positioner

Version C - 2 Positioners

Belts wider than standard are available with 85 mm increments for metric size and 3 in for imperial size | Please contact us if you require further information about the products available

Movex

Movex[®]

Movex worldwide

Movex GmbH

P +49-6204-9375-0

Movex Brasil Ltda

P +55-15-3141-2550

Movex France

P +39-335-8085980

Movex AG India

P +91-120-4159660-62

Movex Russia

P +7 (495) 925-88-56

Movex UK Ltd.

P +44-77-20678442

Movex Nederland

P +31-630-994850

Movex USA Inc.

P +1-919-274-5477

Movex SA de CV

P +52-1-331845818

Movex CIS countries

P +39-348-7769760

Movex S.p.A. a socio unico

Headquarters

Viale Industria, 22 - 24060
Castelli Calepio (BG) Italy

Logistics center

Via della Repubblica, 21/E - 24060
Castelli Calepio (BG) Italy