



Modular belt & Nosebars

521 FT

One track belt

Movex[®]

RANGE EXTENSION

521 FT One track Belt

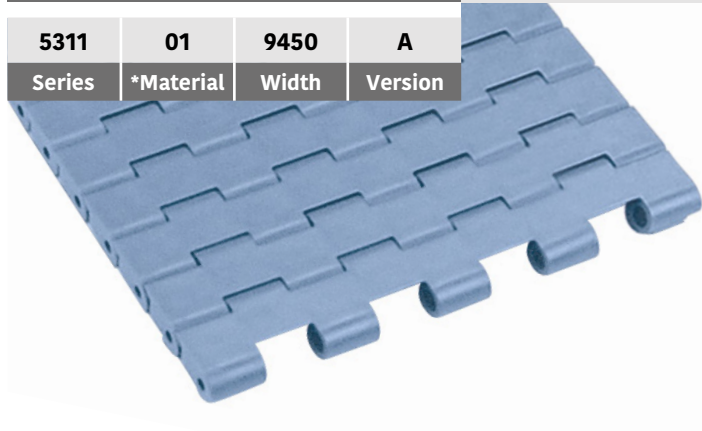
Modular Belt Series 521 FT, H=8,7

Range extension

CODE STRUCTURE GUIDE (Example)

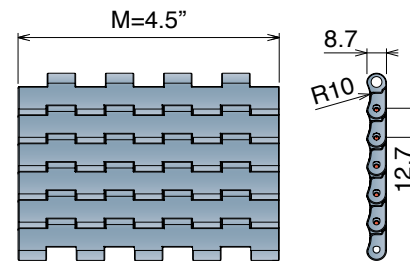
Pitch: 12,7 mm | Backflex radius min.: 10 mm

5311	01	9450	A
Series	*Material	Width	Version

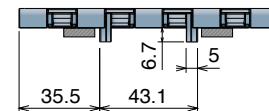


K450

Version A - Standard

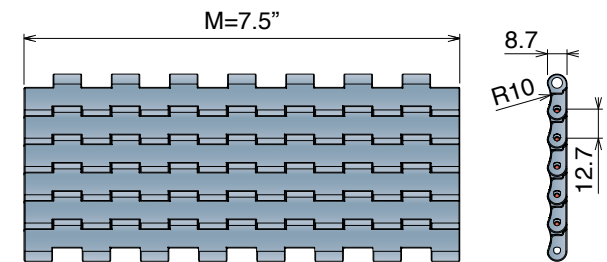


Version C - 2 Positioners

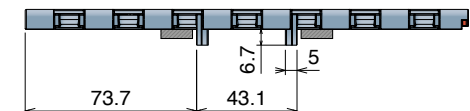


K750

Version A - Standard



Version C - 2 Positioners



Version A - Standard

Series	Material	Width	Version
5311	*	9450	A
5311	*	9750	A

Version C - 2 Positioners

Series	Material	Width	Version
5311	*	9450	C
5311	*	9750	C

*Material

Easy Delivery

LFA - Code 01
Low friction Acetal

Weight: 8,0 kg/m²
Temp. range dry: -40+80 °C
Temp. range wet: -40+65 °C
Pin material: PBT white

MX - Code 03
Performance PBT

Weight: 7,8 kg/m²
Temp. range dry: -40+120 °C
Temp. range wet: -40+60 °C
Pin material: POM grey

DKM - Code 16
Aramide Reinforced Acetal

Weight: 8,0 kg/m²
Temp. range dry: -40+80 °C
Temp. range wet: -40+65 °C
Pin material: PBT white

MWX - Code 17
Polyamide Composite

Weight: 8,3 kg/m²
Temp. range dry: -40+104 °C
Temp. range wet: NR
Pin material: PBT white

MPX - Code 25
Lubricated Acetal

Weight: 8,0 kg/m²
Temp. range dry: -40+80 °C
Temp. range wet: -40+65 °C
Pin material: PBT white

PFX - Code 30
Extra performance PBT

Weight: 7,8 kg/m²
Temp. range dry: -40+120 °C
Temp. range wet: -40+60 °C
Pin material: POM grey

Max working load (N)

Width	K450	K750
LFA	2400	4000
MX	2000	3300
DKM	2400	4000
MWX	2400	4000
MPX	2400	4000
PFX	2000	3300

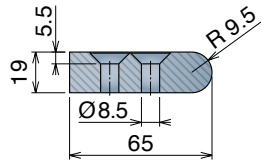
NoseBars for 521 Series

Material / Material / Materialien: **BluLub**

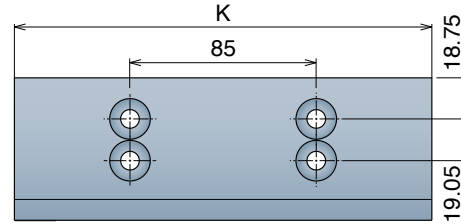
Cuscinetti: Acciaio al cromo / Bearings: Chrome steel / Lagereinsätze: Chrom-Stahl

Rulli: Acciaio inox / Rollers: Stainless steel / Rollen: Edelstahl

STANDARD

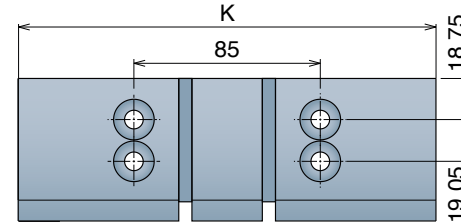


Version A - Standard



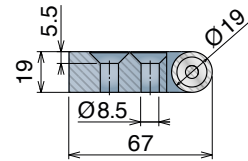
Art-Nr.	K
22846	114.3 (4.5')
22840	190.5 (7.5')

Version C - 2 Positioners

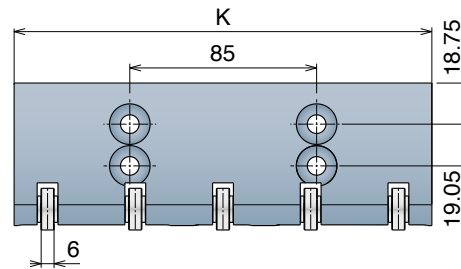


Art-Nr.	K
22837	114.3 (4.5')
22843	190.5 (7.5')

BEARINGS

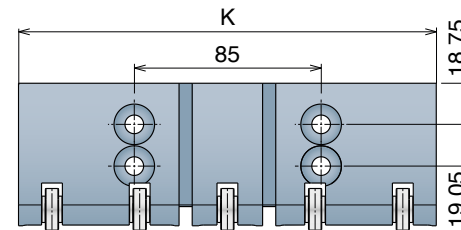


Version A - Standard



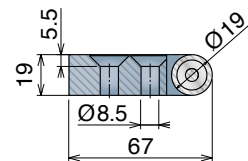
Art-Nr.	K
22848C	114.3 (4.5')
22842C	190.5 (7.5')

Version C - 2 Positioners

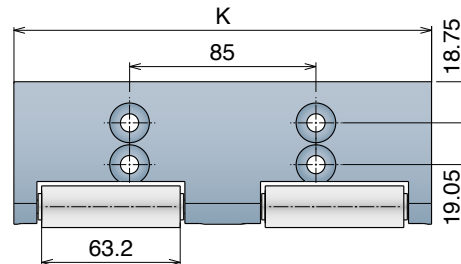


Art-Nr.	K
22838C	114.3 (4.5')
22845C	190.5 (7.5')

ROLLERS

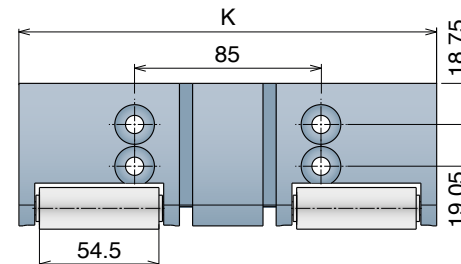


Version A - Standard



Art-Nr.	K
22847B	114.3 (4.5')
22841B	190.5 (7.5')

Version C - 2 Positioners



Art-Nr.	K
22844B	190.5 (7.5')

Movex[®]

www.movexii.com

RANGE EXTENSION