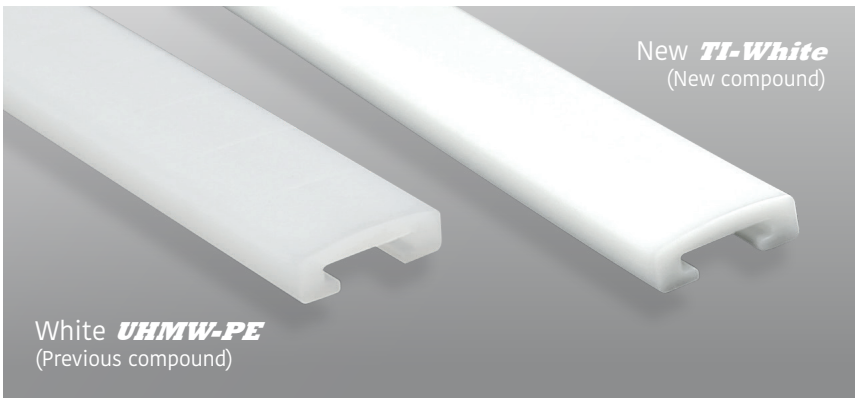


# Titanium White

B R I G H T   E X T R U S I O N

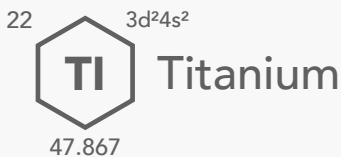


## High-Quality bright white extrusions.

**Titanium White** is the new **Movex®**'s extrusion compound that replaces the standard white UHMW-PE. The name **Titanium White** refers to the special metal because it has comparable unique properties, like high strength and optimum performance, generating low friction, absorbing heat and reducing energy consumption.

Thanks to the **Titanium White** characteristics, the extruded profiles are now made of an intense white, UHMW-PE resulting in a smoother surface and devoid of push marks.

**Titanium White** is available for any type of profile, standard or custom!



Strong metal with low density that is quite ductile, lustrous and metallic white in color.

All these features reflect our extruded profiles with **TI-White** compound.

NEW FEATURES

- High wear and chemical resistance
- Reduced coefficient of friction
- Reduced moisture absorption
- Better lubricant distribution
- Lower energy consumption
- Improved dimensional stability
- Improved UV & aging resistance



### Properties White **UHMW-PE** (Previous compound)

- Molecular density 5,600,000 g/mol.
- Operating temperature: -40 to + 80°C (-40 to 176°F)
- Linear expansion coefficient:  $2 \times 10^{-4} \text{C}^{-1}$  ( $1.1 \times 10^{-4} \text{F}^{-1}$ )



### Properties **Titanium White** (New compound)

- Molecular density 9,200,000 g/mol.
- Operating temperature: -40 to + 80°C (-40 to 176°F)
- Linear expansion coefficient:  $2 \times 10^{-4} \text{C}^{-1}$  ( $1.1 \times 10^{-4} \text{F}^{-1}$ )

# Movex EXTRUSION CENTER



## The ideal answer to your needs.

**Movex®** provides a new generation of high-performing profiles, developed and produced with the most updated technologies in the dedicated extrusion center from our production plant in Castelli Calepio (BG).

**Movex®** meets your needs for standard and custom made products in a dynamic and responsive way, ensuring the best performance to satisfy our customers' requirements.

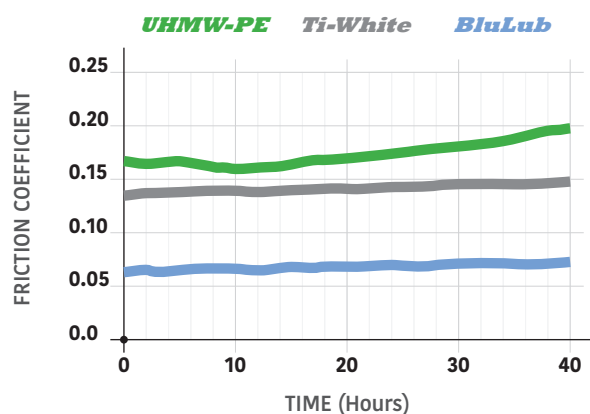
Beside of the standard available profiles like side-guides and wear-strips, **Movex®** is also developing together with our customers innovative special solutions to reach the optimum performance of production lines against attractive prices.

## Other materials available:

### UHMW-PE

Standard profiles are all made with a first-rate **UHMW-PE** Polyethylene, this type of choice offers a good compromise between performance and price. The colors available are black, green, grey and blue.

- Molecular density 5,600,000 g/mol
- Operating temperature: -40 to + 80°C (-40 to 176°F)
- Linear expansion coefficient:  $2 \times 10^{-4} \text{C}^{-1}$  ( $1.1 \times 10^{-4} \text{°F}^{-1}$ )

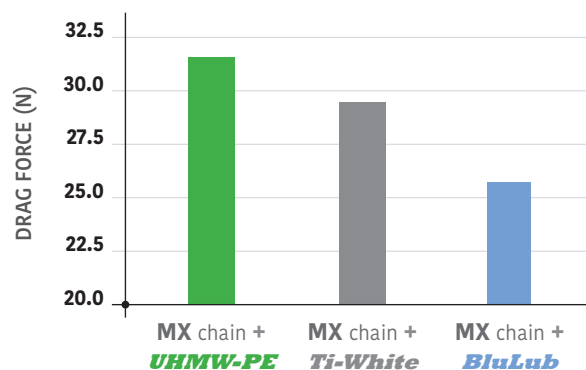


Friction effect - Comparison table

### BluLub®

**BluLub** is a super-performance compounded UHMW-PE material with the latest generation of solid lubricants, contributes to improve PV-properties, especially in applications with limited lubrication, higher speeds and/or higher loads.

- Molecular density 9,200,000 g/mol.
- Operating temperature: -40 to + 80°C (-40 to 176°F)
- Food contact certified



Drag forces effect - Comparison table