

600 Series
and dedicated extruded profiles

MODULAR BELTS AND EXTRUDED PROFILES.



Movex[®]
www.movexii.com



600 Standard

Tappeto Modulare Curvilineo Serie 600, H=12,7 M=85
 Side Flex Modular Belt Series 600, H=12,7 M=85 / Kurvengängige Mattenkette Serie 600, H=12,7 M=85

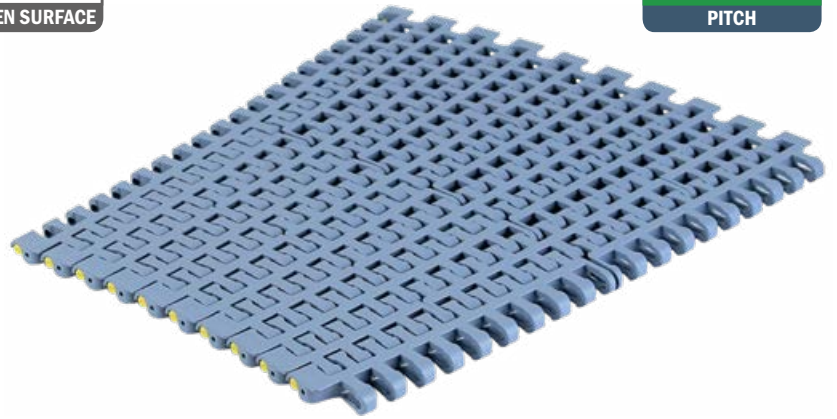
CODE STRUCTURE GUIDE (Example)

Backflex radius min.: 25 mm

| | | | |
|--------|-----------|-------|---------|
| 5421 | 01 | 0255 | A |
| Series | *Material | Width | Version |

29.5%
OPEN SURFACE

31.75 mm
PITCH



*Material

LFA - Code 01

Low friction Acetal

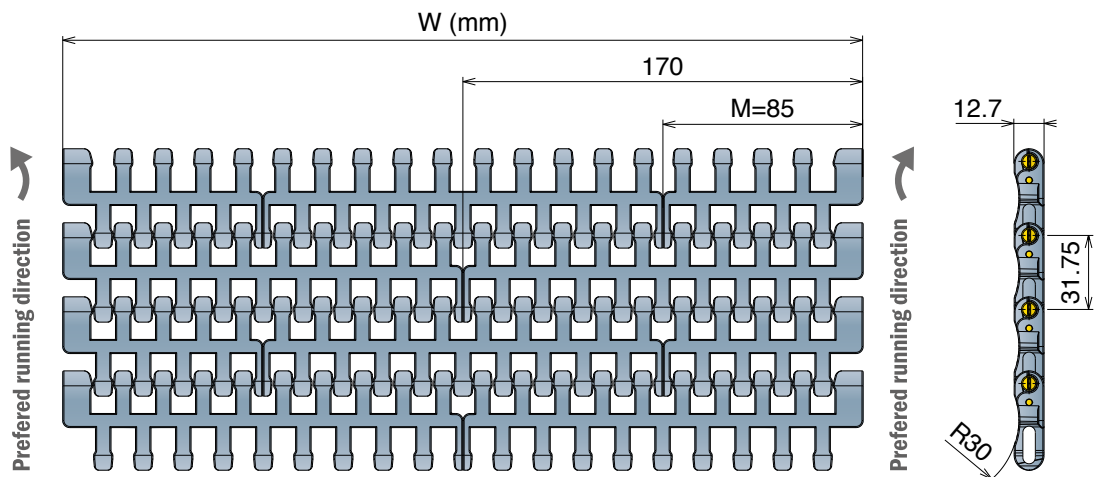
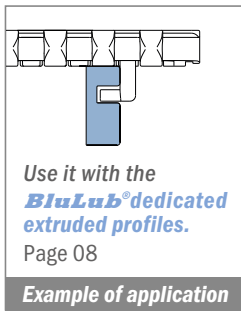
Max w. load:
 Straight 30000 N/m
 Curve 2500 N
Weight: 7,7 kg/m²
Temp. range dry: -40+80 °C
Temp. range wet: -40+65 °C
Pin material: PBT white

LFB - Code 23

Low friction Acetal

Max w. load:
 Straight 30000 N/m
 Curve 2500 N
Weight: 7,7 kg/m²
Temp. range dry: -40+80 °C
Temp. range wet: -40+65 °C
Pin material: PBT white

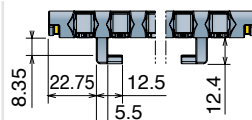
Internal Min Radius
2 times the width



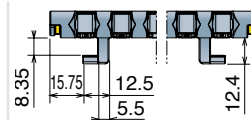
STANDARD



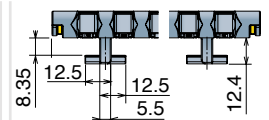
TAB



REVERSE TAB



TAB REVERSE TAB



| Series | Material | Width | Version | min radius |
|--------|----------|-------|---------|------------|
| 5421 | * | 0255 | A | 510 |
| 5421 | * | 0340 | A | 680 |
| 5421 | * | 0425 | A | 850 |
| 5421 | * | 0510 | A | 1020 |
| 5421 | * | 0595 | A | 1190 |
| 5421 | * | 0680 | A | 1360 |
| 5421 | * | 0765 | A | 1530 |
| 5421 | * | 0850 | A | 1700 |
| 5421 | * | 0255 | B | 510 |
| 5421 | * | 0340 | B | 680 |
| 5421 | * | 0425 | B | 850 |
| 5421 | * | 0510 | B | 1020 |
| 5421 | * | 0595 | B | 1190 |
| 5421 | * | 0680 | B | 1360 |
| 5421 | * | 0765 | B | 1530 |
| 5421 | * | 0850 | B | 1700 |
| 5421 | * | 0255 | C | 510 |
| 5421 | * | 0340 | C | 680 |
| 5421 | * | 0425 | C | 850 |
| 5421 | * | 0510 | C | 1020 |
| 5421 | * | 0595 | C | 1190 |
| 5421 | * | 0680 | C | 1360 |
| 5421 | * | 0765 | C | 1530 |
| 5421 | * | 0850 | C | 1700 |
| 5421 | * | 0255 | D | 510 |
| 5421 | * | 0340 | D | 680 |
| 5421 | * | 0425 | D | 850 |
| 5421 | * | 0510 | D | 1020 |
| 5421 | * | 0595 | D | 1190 |
| 5421 | * | 0680 | D | 1360 |
| 5421 | * | 0765 | D | 1530 |
| 5421 | * | 0850 | D | 1700 |

600 Heavy duty

Tappeto Modulare Curvilineo Serie 600, H=12,7 M=85
 Side Flex Modular Belt Series 600, H=12,7 M=85 / Kurvengängige Mattenkette Serie 600, H=12,7 M=85

CODE STRUCTURE GUIDE (Example)

Backflex radius min.: 25 mm

| | | | |
|--------|-----------|-------|---------|
| 5422 | 01 | 0255 | E |
| Series | *Material | Width | Version |

27.5%
OPEN SURFACE

31.75mm
PITCH



* Material

LFA - Code 01

Low friction Acetal

Max w. load:
 Straight 30000 N/m
 Curve 2500 N
Weight: 7,7 kg/m²
Temp. range dry: -40+80 °C
Temp. range wet: -40+65 °C
Pin material: PBT white

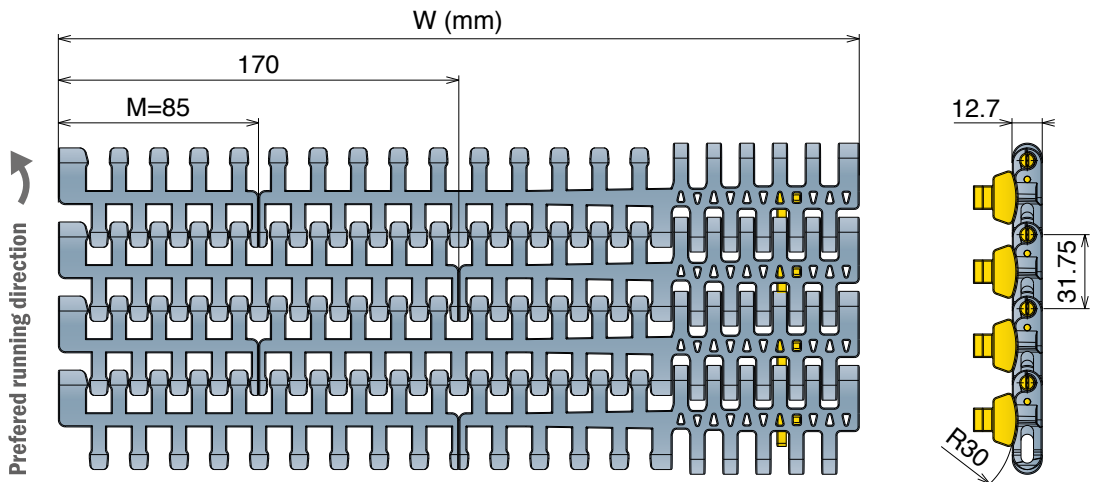
LFB - Code 23

Low friction Acetal

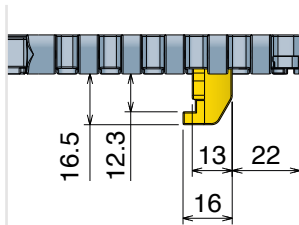
Max w. load:
 Straight 30000 N/m
 Curve 2500 N
Weight: 7,7 kg/m²
Temp. range dry: -40+80 °C
Temp. range wet: -40+65 °C
Pin material: PBT white

Internal Min Radius
2 times the width

Use it with the **BluLub®** dedicated extruded profiles.
 Page 08
Example of application



STANDARD



| Series | Material | Width | Version | min radius |
|--------|----------|-------|---------|------------|
| 5422 | * | 0255 | E | 510 |
| 5422 | * | 0340 | E | 680 |
| 5422 | * | 0425 | E | 850 |
| 5422 | * | 0510 | E | 1020 |
| 5422 | * | 0595 | E | 1190 |
| 5422 | * | 0680 | E | 1360 |
| 5422 | * | 0765 | E | 1530 |
| 5422 | * | 0850 | E | 1700 |

TAB DKM Material



600 Heavy duty with Bearings

Tappeto Modulare Curvilineo Serie 600, H=12,7 M=85
Side Flex Modular Belt Series 600, H=12,7 M=85 / Kurvengängige Mattenkette Serie 600, H=12,7 M=85

CODE STRUCTURE GUIDE (Example)

Backflex radius min.: 25 mm

| | | | |
|--------|-----------|-------|---------|
| 5422 | 01 | 0340 | F |
| Series | *Material | Width | Version |

27.5%
OPEN SURFACE

31.75 mm
PITCH

*Material

LFA - Code 01

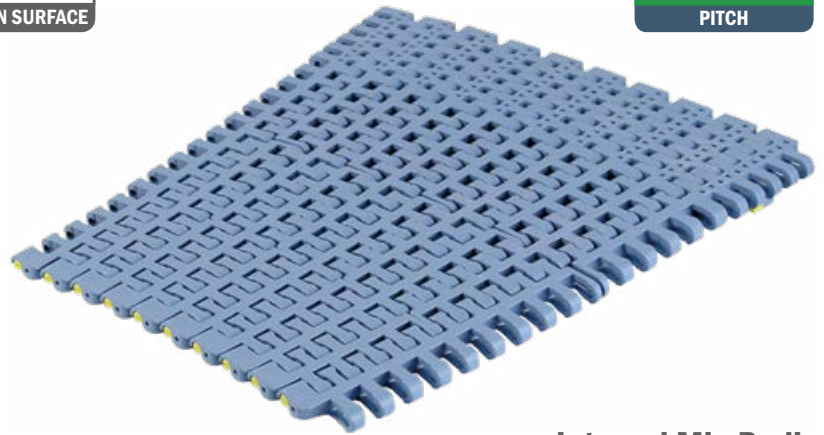
Low friction Acetal

Max w. load:
Straight 30000 N/m
Curve 2500 N
Weight: 7,7 kg/m²
Temp. range dry: -40+80 °C
Temp. range wet: -40+65 °C
Pin material: PBT white

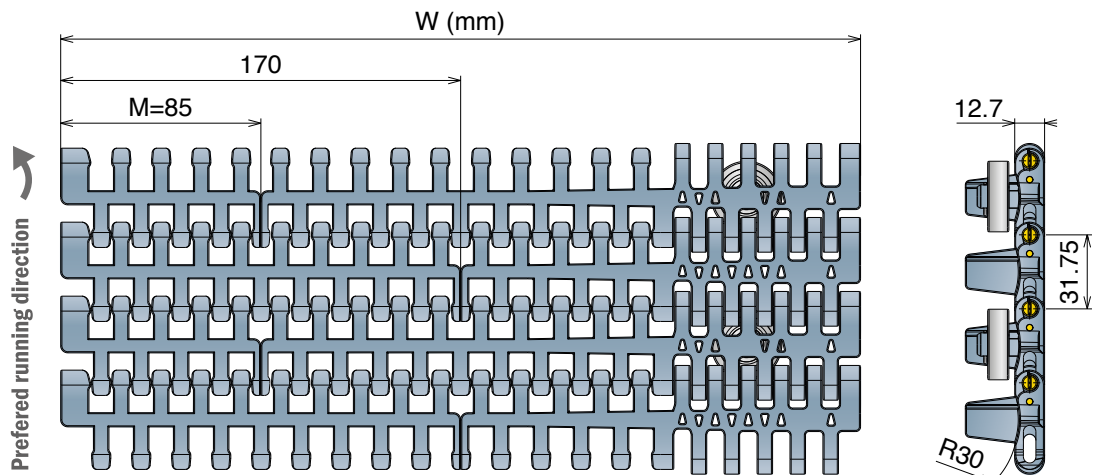
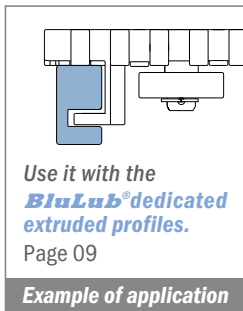
LFB - Code 23

Low friction Acetal

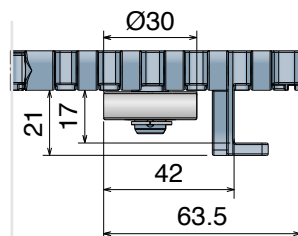
Max w. load:
Straight 30000 N/m
Curve 2500 N
Weight: 7,7 kg/m²
Temp. range dry: -40+80 °C
Temp. range wet: -40+65 °C
Pin material: PBT white



Internal Min Radius
2 times the width



STANDARD



| Series | Material | Width | Version | min radius |
|--------|----------|-------|---------|------------|
| 5422 | * | 0255 | F | 510 |
| 5422 | * | 0340 | F | 680 |
| 5422 | * | 0425 | F | 850 |
| 5422 | * | 0510 | F | 1020 |
| 5422 | * | 0595 | F | 1190 |
| 5422 | * | 0680 | F | 1360 |
| 5422 | * | 0765 | F | 1530 |
| 5422 | * | 0850 | F | 1700 |

Bearing Zoom



600 *Small radius*

Tappeto Modulare Curvilineo Serie 600, H=12,7 M=85
Side Flex Modular Belt Series 600, H=12,7 M=85 / Kurvengängige Mattenkette Serie 600, H=12,7 M=85

CODE STRUCTURE GUIDE (Example)

Backflex radius min.: 25 mm

| | | | |
|-------------|-----------|-------------|----------|
| 5423 | 01 | 0340 | A |
| Series | *Material | Width | Version |

29.5%
OPEN SURFACE

31.75 mm
PITCH



*Material

LFA - Code 01

Low friction Acetal

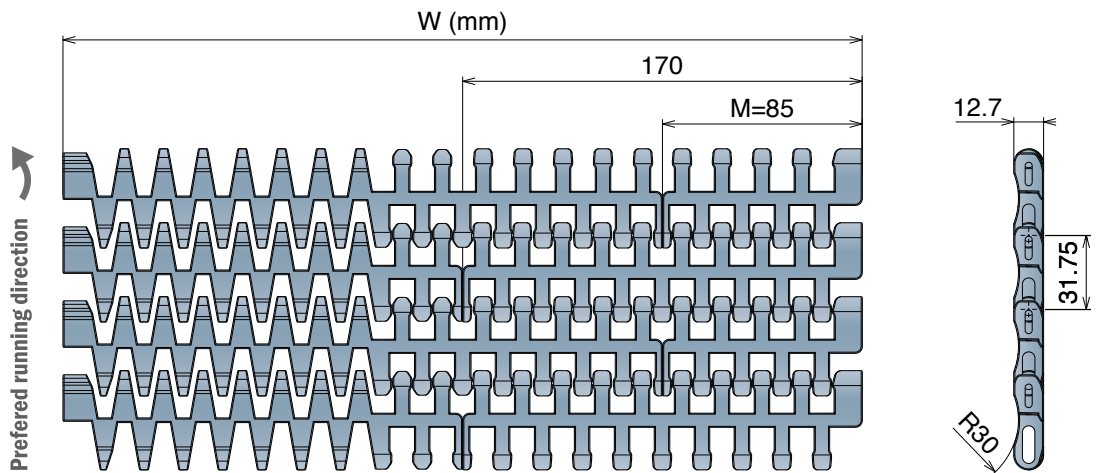
Max w. load:
Straight 30000 N/m
Curve 2500 N
Weight: 7,7 kg/m²
Temp. range dry: -40÷80 °C
Temp. range wet: -40÷65 °C
Pin material: PBT white

LFB - Code 23

Low friction Acetal

Max w. load:
Straight 30000 N/m
Curve 2500 N
Weight: 7,7 kg/m²
Temp. range dry: -40÷80 °C
Temp. range wet: -40÷65 °C
Pin material: PBT white

Use it with the **BluLub®** dedicated extruded profiles.
Page 08
Example of application



STANDARD

TAB

REVERSE TAB

TAB REVERSE TAB

| Series | Material | Width | Version | min radius | Series | Material | Width | Version | min radius | Series | Material | Width | Version | min radius | Series | Material | Width | Version | min radius |
|--------|----------|-------|---------|------------|--------|----------|-------|---------|------------|--------|----------|-------|---------|------------|--------|----------|-------|---------|------------|
| 5423 | * | 0340 | A | 400 | 5423 | * | 0340 | B | 400 | 5423 | * | 0340 | C | 400 | 5423 | * | 0340 | D | 400 |
| 5423 | * | 0425 | A | 500 | 5423 | * | 0425 | B | 500 | 5423 | * | 0425 | C | 500 | 5423 | * | 0425 | D | 500 |
| 5423 | * | 0510 | A | 600 | 5423 | * | 0510 | B | 600 | 5423 | * | 0510 | C | 600 | 5423 | * | 0510 | D | 600 |
| 5423 | * | 0595 | A | 720 | 5423 | * | 0595 | B | 720 | 5423 | * | 0595 | C | 720 | 5423 | * | 0595 | D | 720 |
| 5423 | * | 0680 | A | 880 | 5423 | * | 0680 | B | 880 | 5423 | * | 0680 | C | 880 | 5423 | * | 0680 | D | 880 |
| 5423 | * | 0765 | A | 1040 | 5423 | * | 0765 | B | 1040 | 5423 | * | 0765 | C | 1040 | 5423 | * | 0765 | D | 1040 |
| 5423 | * | 0850 | A | 1200 | 5423 | * | 0850 | B | 1200 | 5423 | * | 0850 | C | 1200 | 5423 | * | 0850 | D | 1200 |

600 Heavy duty/Small radius

Tappeto Modulare Curvilineo Serie 600, H=12,7 M=170
Side Flex Modular Belt Series 600, H=12,7 M=170 / Kurvengängige Mattenkette Serie 600, H=12,7 M=170

CODE STRUCTURE GUIDE (Example)

Backflex radius min.: 25 mm

| | | | |
|--------|-----------|-------|---------|
| 5424 | 01 | 0425 | E |
| Series | *Material | Width | Version |

27.5%
OPEN SURFACE

31.75 mm
PITCH

*Material

LFA - Code 01

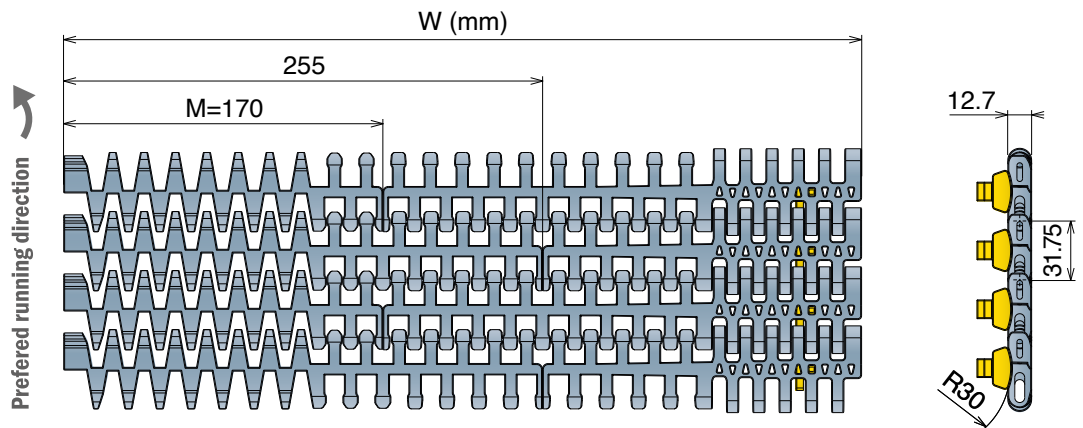
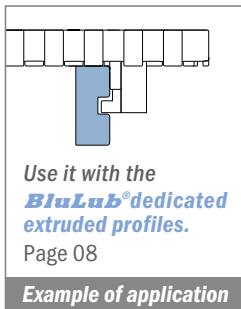
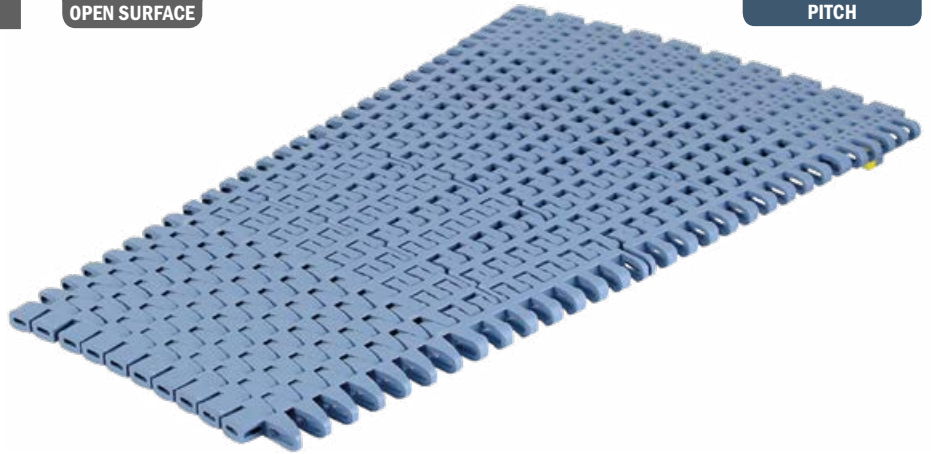
Low friction Acetal

Max w. load:
Straight 30000 N/m
Curve 2500 N
Weight: 7,7 kg/m²
Temp. range dry: -40+80 °C
Temp. range wet: -40+65 °C
Pin material: PBT white

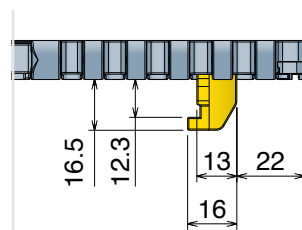
LFB - Code 23

Low friction Acetal

Max w. load:
Straight 30000 N/m
Curve 2500 N
Weight: 7,7 kg/m²
Temp. range dry: -40+80 °C
Temp. range wet: -40+65 °C
Pin material: PBT white



STANDARD



| Series | Material | Width | Version | min radius |
|--------|----------|-------|---------|------------|
| 5424 | * | 0255 | E | 390 |
| 5424 | * | 0340 | E | 420 |
| 5424 | * | 0425 | E | 500 |
| 5424 | * | 0510 | E | 600 |
| 5424 | * | 0595 | E | 720 |
| 5424 | * | 0680 | E | 880 |
| 5424 | * | 0765 | E | 1040 |
| 5424 | * | 0850 | E | 1200 |

TAB DKM Material



600 Heavy duty/Small radius with Bearings

Tappeto Curvilineo Serie 600, H=12,7 M=170
Side Flex Modular Belt Series 600, H=12,7 M=170 / Kurvengängige Mattenkette Serie 600, H=12,7 M=170

CODE STRUCTURE GUIDE (Example)

Backflex radius min.: 25 mm

| | | | |
|--------|-----------|-------|---------|
| 5424 | 01 | 0425 | F |
| Series | *Material | Width | Version |

27.5%
OPEN SURFACE

31.75mm
PITCH



*Material

LFA - Code 01

Low friction Acetal

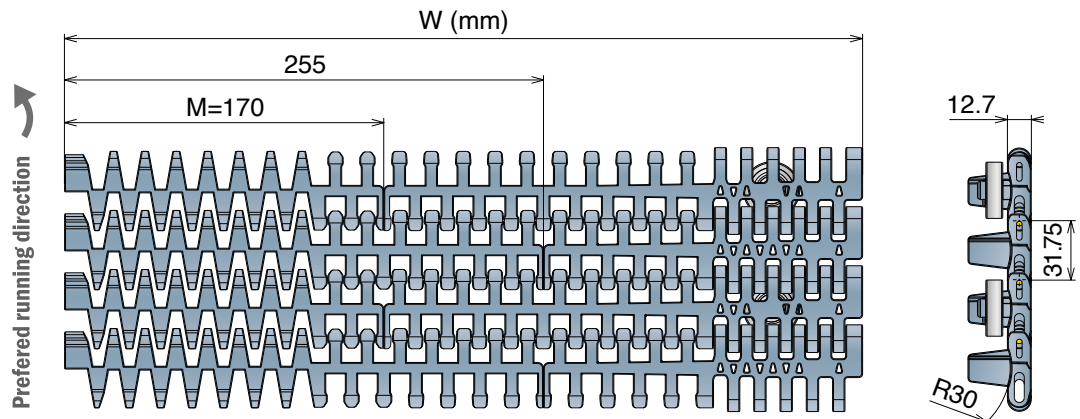
Max w. load:
Straight 30000 N/m
Curve 2500 N
Weight: 7,7 kg/m²
Temp. range dry: -40+80 °C
Temp. range wet: -40+65 °C
Pin material: PBT white

LFB - Code 23

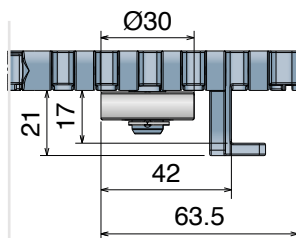
Low friction Acetal

Max w. load:
Straight 30000 N/m
Curve 2500 N
Weight: 7,7 kg/m²
Temp. range dry: -40+80 °C
Temp. range wet: -40+65 °C
Pin material: PBT white

Use it with the **BluLub®** dedicated extruded profiles.
Page 09
Example of application



STANDARD



| Series | Material | Width | Version | min radius |
|--------|----------|-------|---------|------------|
| 5424 | * | 0255 | F | 390 |
| 5424 | * | 0340 | F | 420 |
| 5424 | * | 0425 | F | 500 |
| 5424 | * | 0510 | F | 600 |
| 5424 | * | 0595 | F | 720 |
| 5424 | * | 0680 | F | 880 |
| 5424 | * | 0765 | F | 1040 |
| 5424 | * | 0850 | F | 1200 |

Bearing Zoom

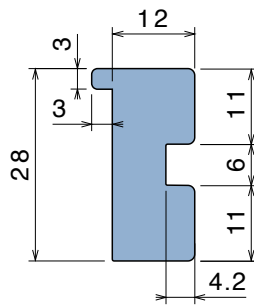
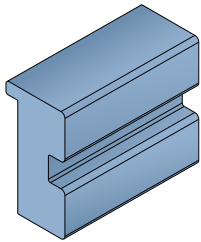
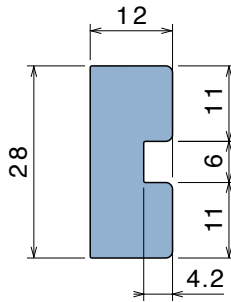
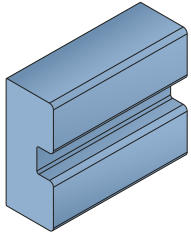


Extruded profiles

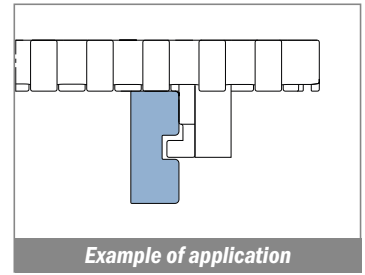
for 600 Heavy duty / Small radius

NEW

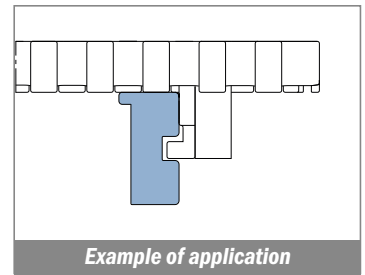
Minimum radius of curvature: 390 mm



| Article-Nr. | Material | Availability | Supply |
|-------------|----------|--------------|----------|
| 104700BC | BluLub | On request | 3 m bars |



| Article-Nr. | Material | Availability | Supply |
|-------------|----------|--------------|----------|
| 104700BC-B | BluLub | On request | 3 m bars |

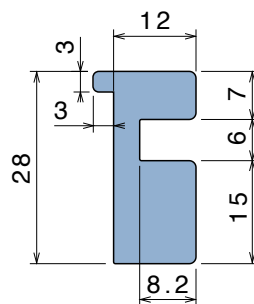
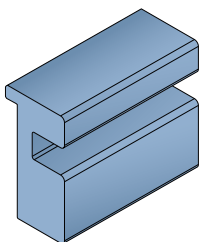
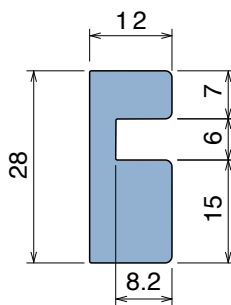
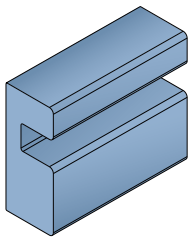


Extruded profiles

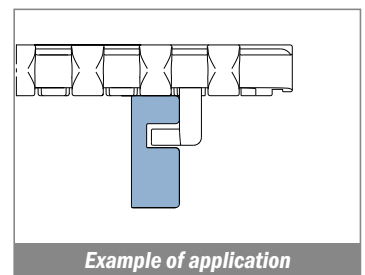
for 600 Standard / Small radius

NEW

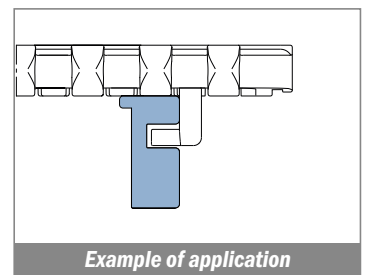
Minimum radius of curvature: 390 mm



| Article-Nr. | Material | Availability | Supply |
|-------------|----------|--------------|----------|
| 104710BC | BluLub | On request | 3 m bars |



| Article-Nr. | Material | Availability | Supply |
|-------------|----------|--------------|----------|
| P104710BC-B | BluLub | On request | 3 m bars |



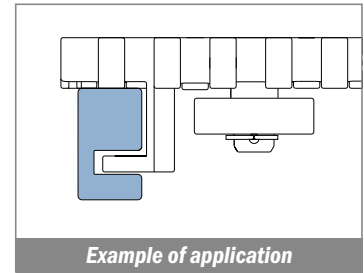
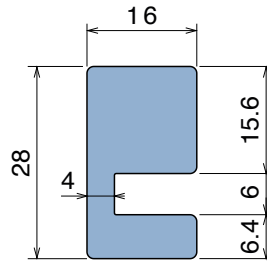
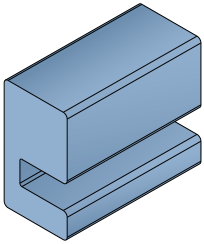
Extruded profiles

for 600 Heavy duty / Small radius with Bearings

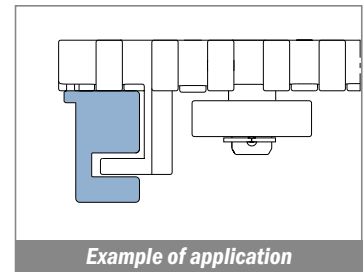
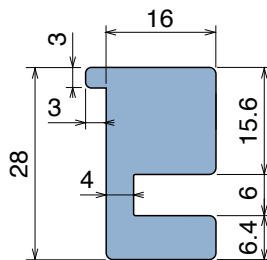
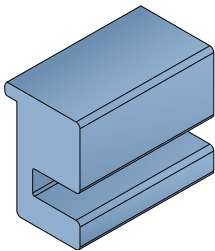
NEW

Minimum radius of curvature: 390 mm

| Article-Nr. | Material | Availability | Supply |
|-----------------|---------------|--------------|----------|
| 104720BC | BluLub | On request | 3 m bars |



| Article-Nr. | Material | Availability | Supply |
|-------------------|---------------|--------------|----------|
| 104720BC-B | BluLub | On request | 3 m bars |



Movex S.p.A.

Headquarters

Viale Industria, 22
24060 Castelli Calepio (BG)

Logistics Center

Via della Repubblica, 21/E
24060 Castelli Calepio (BG)

Phone +39 035 8359711

info@movexii.com

www.movexii.com

Follow us    

#MovexWorld

Movex worldwide

Movex GmbH

P +49-6204-9375-0

Movex Brasil Ltda

P +55-15-3141-2550

Movex France

P +39-335-8085980

Movex AG India

P +91-120-4159660-62

Movex UK Ltd.

P +44-77-20678442

Movex Nederland

P +31-630-994850

Movex USA Inc.

P +1-877-401-5377

Movex SA de CV

P +52-1-331845818

Movex CIS Countries

P +39-348-7769760



movexii.com

