



Roller guides
Part. 358

Movex[®]

PRODUCT PRESENTATION

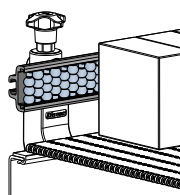
Part. 358 Roller guides

NEW

Guide material: Black UHMW-PE

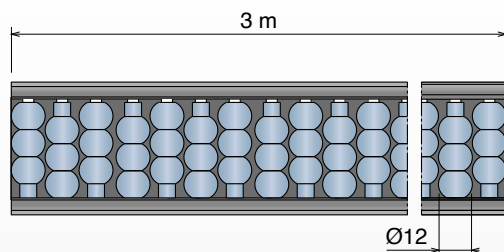
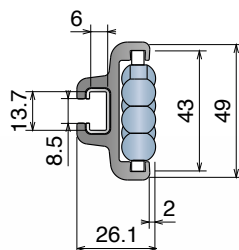
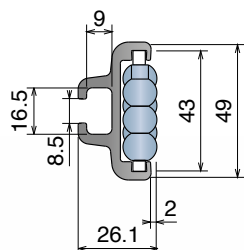


Roller in Acetal resin
TYPE A



STANDARD design

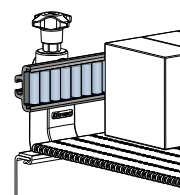
REINFORCED Design
with stainless steel profile



Part	Article-Nr.	Type
358	35822	Standard
358	35822H	Reinforced

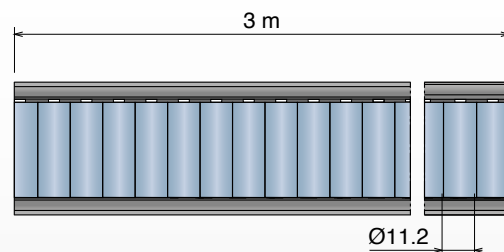
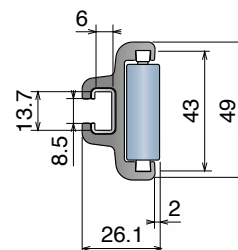
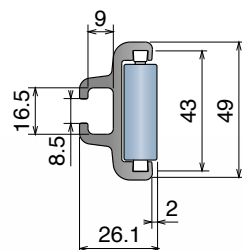


Roller in Acetal resin
TYPE B



STANDARD design

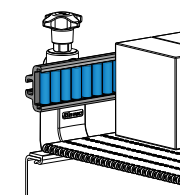
REINFORCED Design
with stainless steel profile



Part	Article-Nr.	Type
358	35824	Standard
358	35824H	Reinforced

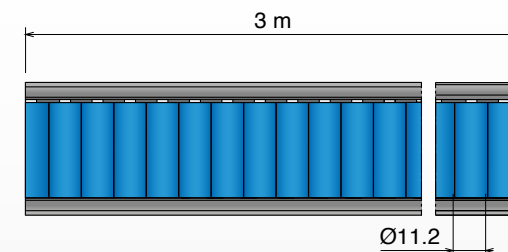
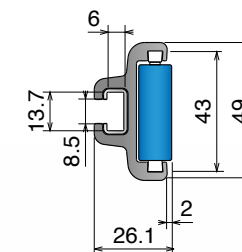
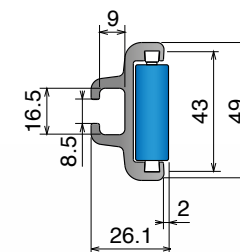


Soft roller in SEBS rubber
TYPE B1



STANDARD design

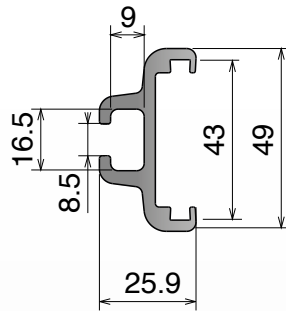
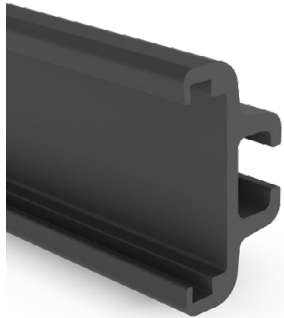
REINFORCED Design
with stainless steel profile



Part	Article-Nr.	Type
358	35826	Standard
358	35826H	Reinforced

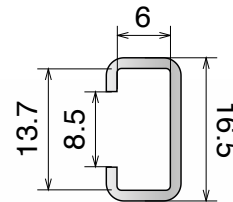
Spare parts

358 Plastic profile

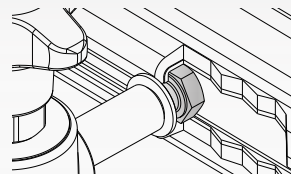


Part	Article-Nr.	Material	Supply
358	35820EC	UHMW-PE	3 m bars

358 SS Profile



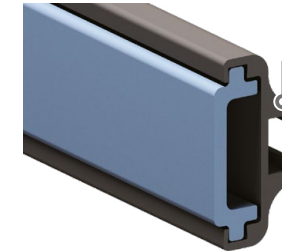
Used with **M8 Hex head bolt**



Part	Article-Nr.	Material	Supply
358	35820C	SS	3 m bars

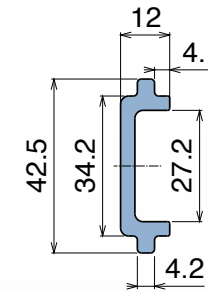
Accessories

395 PE Side guides

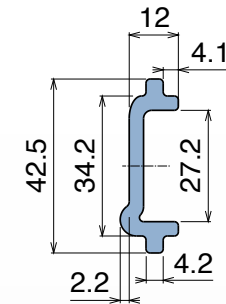


The codes below refer only to the PE side guides.

The plastic profile Part 358 must be order separately.



TYPE A



TYPE B

Article-Nr.	Material	Supply	Type
39510BC	<i>BluLub</i>	3 m bars	A
39510C	<i>Ti-White</i>	3 m bars	A
39520BC	<i>BluLub</i>	3 m bars	B
39520C	<i>Ti-White</i>	3 m bars	B

Movex[®]

www.movexii.com

PRODUCT PRESENTATION