

ZER⁵²⁰CONTACT[#]

HYGIENIC CURVE CONVEYOR

Movex[®]

www.movexii.com

ZERO⁵²⁰CONTACT#

Hygienic curve conveyor



Food contact certified

Zero Contact modular belt is suitable in food application.



Hygienic Design

Completely sanitized and certified.



No bacteria

Reduces the procreation of bacteria on the line.



Superior Durability

High working load guaranteed.



User-friendliness

Easy installation and interchangeability also in existing lines.



Quick maintenance

and reduced downtimes.

Movex

It carries everything, in any environment!

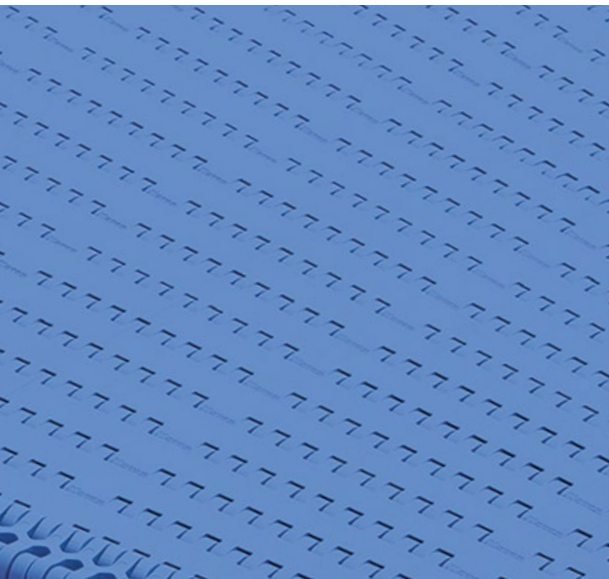
Specifically designed for industrial environments with critical hygienic level, **Movex[®] Hygienic Zero Contact** is the perfect solutions for dairy, food, chemical and pharmaceutical industries, subjected to daily washing cycles.

The **Movex[®] Zero Contact** modular belt is approved for direct food contact by FDA. Any bulk food product can stay on the modular belt without contamination.

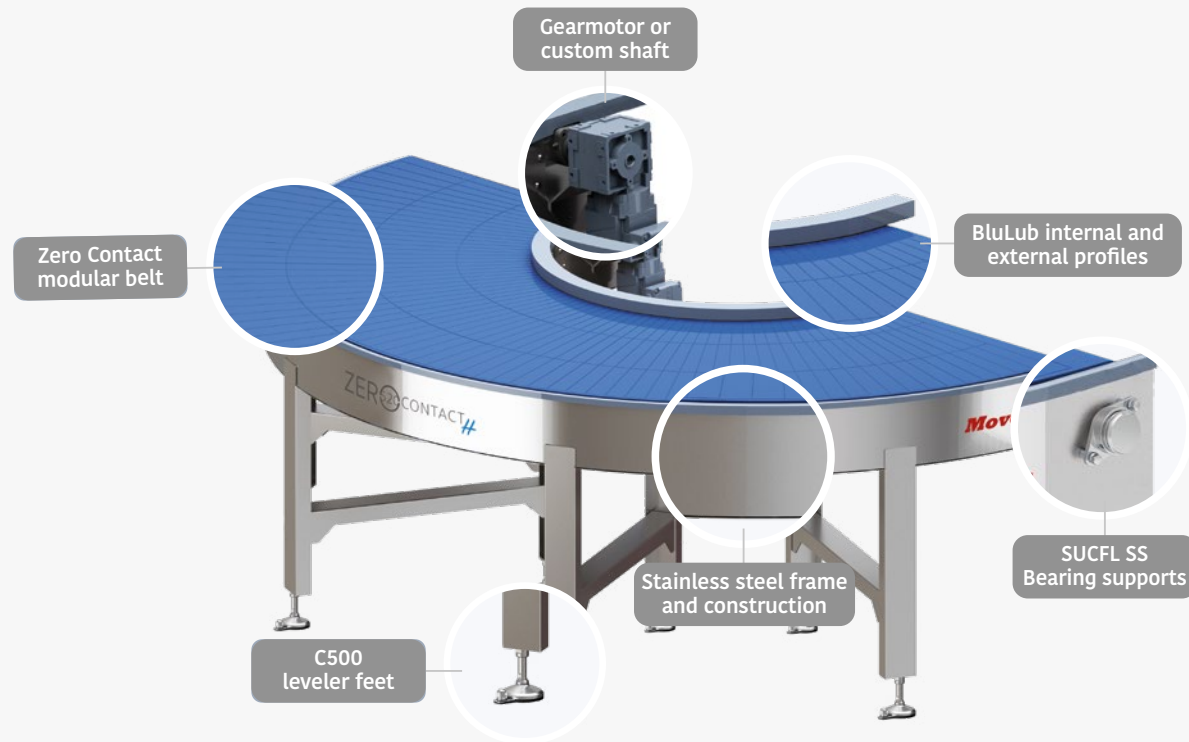
With reference to the foodstuff categories detailed by Reg. (EU) No. 10/2011. More information available on the **Movex Food Contact Compliance Datasheet**.



FDA
ZERO CONTACT
MODULAR BELT



Description and Features



General Features

INNER RADIUS (mm): 600 ÷ 2000
BELT WIDTH (mm): 200 ÷ 1600
MAX. WORK LOAD (N/m): 13.500
ANGLE: 90°/180° (different on request)

Modular Belt

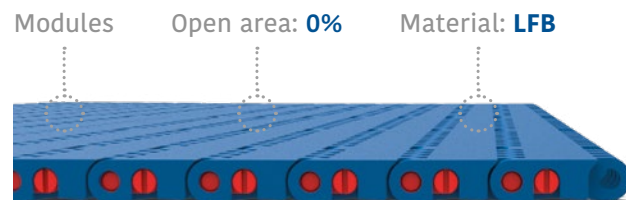
THICKNESS (mm): 10,1
WEIGHT (Kg/m²): 9,25
OPEN AREA: 0°
ROW TO ROW ANGLE: 1,33°

Materials

MATERIAL OF MODULES: Low friction acetal (POM)
TEMP. RANGE (°C): Dry -40 ÷ 80 | Wet -40 ÷ 65
PINS White PBT Ø 4,7 mm
FRAME Stainless steel

Modular Belt

Hygienic and certified



Main features:

- Inner radius: 600 mm ÷ 2000 mm
- Belt width: 200 mm ÷ 1600 mm
- Angle: 90° and 180° (different on request)
- Row to row angle: 1,33°
- Pin material: Ø4,7 mm, PBT White



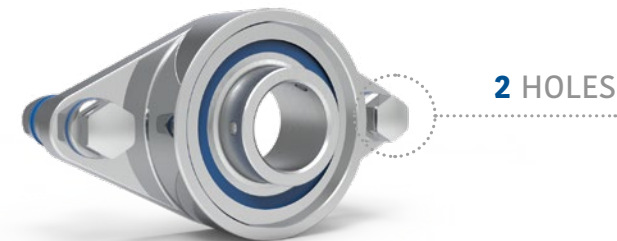
Zero Contact modular fixed radius curve belt is the best choice for all type of transportation, for beverage, food and logistic industries, thanks to its versatility.

The belt is compliant to:

- Regulation: D.P.R. 777 - 23 August 1982 e D.L. 108 - 25 January 1992;
- UNI EN 1186 1÷15:2003
- D.M. 34 del 21.3.73 S.O. GU n° 104 - 20/04/73 and following updates
- Regulation (EU) n. 10/2011, GUUE L 12 del 15/01/2011 and following updates

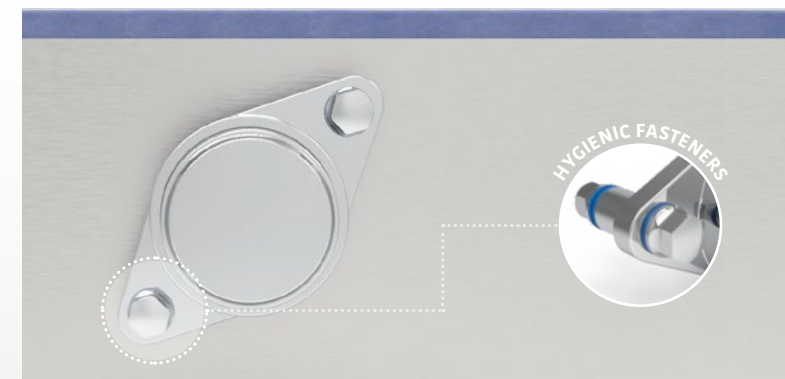
SUCFL Stainless steel Bearing supports

Hygienic design



Main features:

- Housing in stainless steel AISI 440
- SS ProRun bearing insert (pre-lubricated)
- Closed Cap in stainless steel AISI 304
- Best choice for food or pharmaceutical industries



C500 Standard

Hygienic and certified

Available Ø

60 | 80 | 105 | 125 | 150

Main features:

- Load up to 45.000 N
- Reduced roughness
- Height variation 105-270 mm
- Blue seals for hermetic closure

Material description:

- Feet baseplates in AISI 304
- Spindles and covers in AISI 304
- Blu seals for hermetic closure
- Vulcanized anti-slip rubber



Spacers

Stainless steel

Main features:

- Stainless steel structure AISI 304
- Blue seal for hermetic closure



Nuts

Hygienic and certified

Main features:

- Stainless steel structure AISI 304
- Blue seal for hermetic closure



Screws

Stainless steel

Main features:

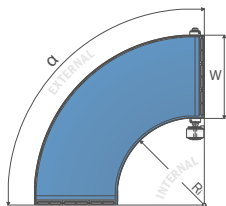
- Stainless steel structure AISI 304
- Blue seal for hermetic closure



STANDARD ACCESSORIES CERTIFICATIONS



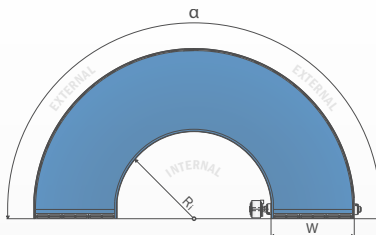
Angle 90°



| Conveyor Width | Conveyor Radius | | | | | | | |
|----------------|-----------------------|-----------------------|------------------------|------------------------|------------------------|------------------------|------------------------|------------------------|
| | R _i 600 mm | R _i 800 mm | R _i 1000 mm | R _i 1200 mm | R _i 1400 mm | R _i 1600 mm | R _i 1800 mm | R _i 2000 mm |
| 200 mm | W02R06G090-CDH | W02R08G090-CDH | W02R10G090-CDH | W02R12G090-CDH | W02R14G090-CDH | W02R16G090-CDH | W02R18G090-CDH | W02R20G090-CDH |
| 400 mm | W04R06G090-CDH | W04R08G090-CDH | W04R10G090-CDH | W04R12G090-CDH | W04R14G090-CDH | W04R16G090-CDH | W04R18G090-CDH | - |
| 600 mm | W06R06G090-CDH | W06R08G090-CDH | W06R10G090-CDH | W06R12G090-CDH | W06R14G090-CDH | W06R16G090-CDH | - | - |
| 800 mm | W08R06G090-CDH | W08R08G090-CDH | W08R10G090-CDH | W08R12G090-CDH | W08R14G090-CDH | - | - | - |
| 1000 mm | W10R06G090-CDH | W10R08G090-CDH | W10R10G090-CDH | W10R12G090-CDH | - | - | - | - |
| 1200 mm | W12R06G090-CDH | W12R08G090-CDH | W12R10G090-CDH | - | - | - | - | - |
| 1400 mm | W14R06G090-CDH | W14R08G090-CDH | - | - | - | - | - | - |
| 1600 mm | W16R06G090-CDH | - | - | - | - | - | - | - |

These codes mean complete curve, except floor supports and gearmotor, if you need to include them please see next page. For the **left version**, simply replace “-CDH” with “-CSH” in the article code (e.g. W02R06G090-CSH)

Angle 180°



| Conveyor Width | Conveyor Radius | | | | | | | |
|----------------|-----------------------|-----------------------|------------------------|------------------------|------------------------|------------------------|------------------------|------------------------|
| | R _i 600 mm | R _i 800 mm | R _i 1000 mm | R _i 1200 mm | R _i 1400 mm | R _i 1600 mm | R _i 1800 mm | R _i 2000 mm |
| 200 mm | W02R06G180-CDH | W02R08G180-CDH | W02R10G180-CDH | W02R12G180-CDH | W02R14G180-CDH | W02R16G180-CDH | W02R18G180-CDH | W02R20G180-CDH |
| 400 mm | W04R06G180-CDH | W04R08G180-CDH | W04R10G180-CDH | W04R12G180-CDH | W04R14G180-CDH | W04R16G180-CDH | W04R18G180-CDH | - |
| 600 mm | W06R06G180-CDH | W06R08G180-CDH | W06R10G180-CDH | W06R12G180-CDH | W06R14G180-CDH | W06R16G180-CDH | - | - |
| 800 mm | W08R06G180-CDH | W08R08G180-CDH | W08R10G180-CDH | W08R12G180-CDH | W08R14G180V | - | - | - |
| 1000 mm | W10R06G180-CDH | W10R08G180-CDH | W10R10G180-CDH | W10R12G180-CDH | - | - | - | - |
| 1200 mm | W12R06G180-CDH | W12R08G180-CDH | W12R10G180-CDH | - | - | - | - | - |
| 1400 mm | W14R06G180-CDH | W14R08G180-CDH | - | - | - | - | - | - |
| 1600 mm | W16R06G180-CDH | - | - | - | - | - | - | - |

These codes mean complete curve, except floor supports and gearmotor, if you need to include them please see next page. For the **left version**, simply replace “-CDH” with “-CSH” in the article code (e.g. W02R06G180-CSH)

Floor support

with leveling feet



| | Angle 90° | Angle 180° |
|----------------|---------------------------|---------------------------|
| Conveyor Width | Floor support Article Nr. | Floor support Article Nr. |
| 200 mm | W02G090HH | W02G180HH |
| 400 mm | W04G090HH | W04G180HH |
| 600 mm | W06G090HH | W06G180HH |
| 800 mm | W08G090HH | W08G180HH |
| 1000 mm | W10G090HH | W10G180HH |
| 1200 mm | W12G090HH | W12G180HH |
| 1400 mm | W14G090HH | W14G180HH |
| 1600 mm | W16G090HH | W16G180HH |

For different heights or custom specification please contact your sales representative.

SEW

Gearmotor

- Type WA30 DRN71M4
Power 0,37 kW
- Type WA30 DRN80MK4
Power 0,55 kW
- Internal shaft position
(no cable supplied)
- Food grade oil



| Curve | Power | Article Nr. |
|-------------|----------------|-----------------|
| 90° | 0,37 Kw | M090-S/I |
| 180° | 0,55 Kw | M180-S/I |

BONFIGLIOLI

Gearmotor

- Type BN 71B 4 B14 KW 0,37
Power 0,37 kW
- Type BN 71C 4 B14 KW 0,55
Power 0,55 kW
- Internal shaft position
(no cable supplied)



| Curve | Power | Article Nr. |
|-------------|----------------|------------------|
| 90° | 0,37 Kw | M090L-S/I |
| 180° | 0,55 Kw | M180L-S/I |

For different gearmotors please contact your sales representative.
SEW and BONFIGLIOLI are believed to be the trademarks and/or trade names of their respective owners and are not owned or controlled by Movex.

Movex[®]

Movex worldwide

Movex GmbH

P +49-6204-9375-0

Movex Brasil Ltda

P +55-15-3141-2550

Movex France

P +33-06-21-02-79-15

Movex AG India

P +91-120-4159660-62

Movex UK Ltd.

P +44-77-20678442

Movex Nederland

P +31-630-994850

Movex USA Inc.

P +1-877-4011-5377

Movex SA de CV

P +52-1-3318458187

Movex CIS countries

+39-348-7769760

Movex S.p.A.

Headquarter

Viale Industria, 22 - 24060
Castelli Calepio (BG) Italy

Logistics center

Via Repubblica, 21/E - 24060
Castelli Calepio (BG) Italy