

V6

Movex
Blueline[®]
PRODUCTS OVERVIEW

WORLDWIDE Support, Superior PERFORMANCE.

Movex® is a dynamic company driven by the ambition to design and manufacture conveying and material handling technology of the highest quality. We combine superior technical performance and design to provide customers with innovative solutions and impeccable service.

At our Italian headquarters, we design and manufacture standard and customized products and solutions to meet customers' needs in a dynamic and proactive environment.

Movex® follows every single customer from the project to installation, guaranteeing full support. With more than 30 technical sales representatives worldwide, we offer global support directly on-site, via video conference or by phone. Thanks to worldwide warehousing, we are able to provide short lead times and, in the event of the need for faster delivery times, our Priority Service, offering delivery in 1/2 working days, is always available.

Movex®, experience the difference.



MISSION

To forge our values through the development of ideas and high standards, and to professionally support our partners with flexibility and efficiency.



VISION

To achieving strong market leadership, while constantly remaining up to date. To plan our future while remaining faithful to our history and values.



Priority service

**Even faster and responsive,
when you need it.**

Products in stock are available to ship within 24 Hours of the receipt of order.

>10.000
ARTICLES NUMBER
READY TO DELIVERY

Request a free quotation!



EUROBELT
A Movex Group Company

Stronger, together.

In September 2025, Movex Group officially announced the integration of Eurobelt S.A., Spain's leader in modular plastic belts, into its industrial and commercial structure.

For our customers, it means more high-quality solutions, deeper expertise, and even closer support.

Discover more on www.eurobelt.com

MODULAR BELTS

| | | | | | | | |
|------------------|------------------------------|-------------------------------|-----------------------------------|---------------------|------------------|------------------|-------------|
| 8 mm pitch | 7870 Flat top | 7870 Flush grid | 7870 Diamond top | 7870 Cone top | 7870 Non slip | | |
| 12.7 mm pitch | 7185 Flush grid New | 7220 Flat top | 7220 Grip top | 7233 Flush grid | 7233 FG Grip top | 7234 Nub top | |
| 19.05 mm pitch | 590 Flat top | 590 Flush grid | Accessories | | | | |
| 25.4 mm pitch | 7510 Flat top | 7510 Nub top | 7510 Diamond top | 7510 Mesh top | 7520 Flat top | 7520 Flush grid | Accessories |
| 25.7 mm pitch | 7585 Flush grid New | | | | | | |
| 50.8 mm pitch | 7010 Flat top | 7010 Cone top | 7010 Nub top | 7010 Perforated top | Accessories | | |
| | 7010 HD Flat top New | 7010 Mold to Width New | 7010 HD Perforated top New | | | | |
| Sideflexing belt | 7540 R Flush grid | 7544 TR Flush grid | 7544 TR-FG Grip top | Accessories | | | |
| | 7290 R Flush grid New | 7293 TR Flush grid New | Accessories New | Fixed radius belt | Zero Contact | Zero Contact Pro | |

Explore Movex's innovative range of belt materials.

| | | | |
|----------------------------------------------------------------------|--------------------------------------------------------|-------------------------------------------------------|-----------------------------------------------------------------------------------------------------------------------------------------------------|
| POM Polyoxymethylene RAL 5005 Cyan White Natural | PP Polypropylene RAL 5005 Cyan White | PE Polyethylene RAL 5005 Cyan White | SPECIAL MATERIAL - Upon request PKX Impact and cut resistant Polyoxymethylene White MDX Metal detectable Polyoxymethylene RAL 5005 |
|----------------------------------------------------------------------|--------------------------------------------------------|-------------------------------------------------------|-----------------------------------------------------------------------------------------------------------------------------------------------------|

MODULAR SOLUTIONS

| | | | | | | | |
|--------------|----------------|------------------------|-----------------------|---------------------------------|----------|--------------|-------------|
| | | | | | | | |
| Zero Contact | Zero Contact S | Zero Contact Flat Edge | Zero Contact Hygienic | Zero Contact Pro / Pro 2 Tracks | Zero ATP | Zero ATP Pro | 553 Sorter+ |

SPROCKETS



7870 Series



7185-7220
7233-7234 Series



590 Series



7510-7520
7585 Series



7010-7290
7293 Series



7010 QuickFit

New



Zero Contact Series

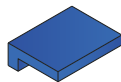


7540-7544 Series

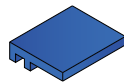
EXTRUDED PROFILES

Available in *BluLub®* / *Ti-White®* / *UHMW-PE* / *AS Antistatic*

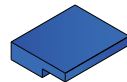
L-Profile



1094

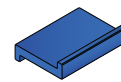


1058

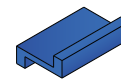


174

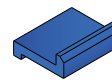
Z-Profile



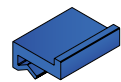
101



1117

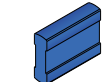


1118

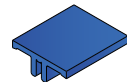


1019

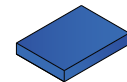
Special shape



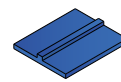
107



108

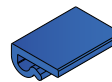


105

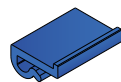


106

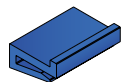
J-Profile



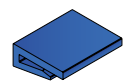
103



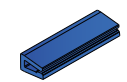
104



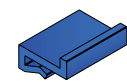
1014



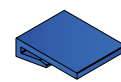
1017



1068

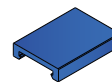


1023

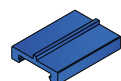


1025

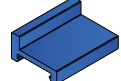
U-Profile



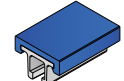
109



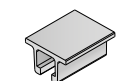
110



156

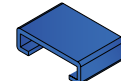


148

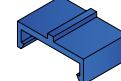


147

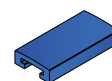
C-Profile



1082



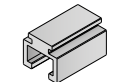
1054



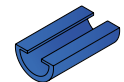
160



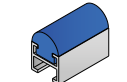
162



165

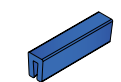


1039

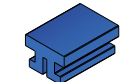


155

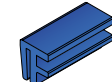
Bar cap & cover



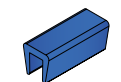
1000



1095



1040



1009



181



Side guide rail



1103



137



1064



183



189 Label s.



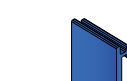
1079 RS



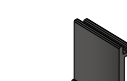
1104



135



1057



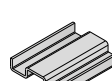
1077 RS



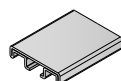
193



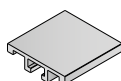
189 Label s.



117



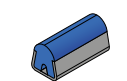
1055



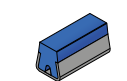
159/1088/1089



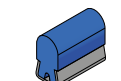
Guide rail



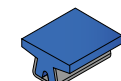
119



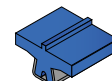
121 Hygienic



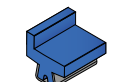
1067



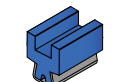
146



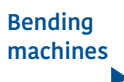
142



144



145



Bending machines



189/199



151



Accessories



115



116

RETURN COMPONENTS



219/201/202
ø40/ø50/ø60



220/203/204
ø47/ø57/ø67



222/224/226
ø40/ø50/ø60



223/225/227
ø47/ø57/ø67



236-237



215-221



217



218

New

CONVEYOR COMPONENTS



CONVEYOR SUPPORT COMPONENTS



BEARING SUPPORTS



Hygienic Series
FL / F / FB / UCP / UCT / UCPA
Available with or without sealed cap (Open/Closed).

Hygienic Accessories



Open cap & sealing ring



Hygienic SS ProRun Series
SUCFL / SUCFK / SUCF / SUCPA
Available only with sealed cap (Open/Closed).



EQUIPPED WITH
SS ProRun
bearing insert
The new benchmark in
hygienic bearing units.

LEVELING FEET



S400B Series
Available in Split, Heavy & Heavy-split versions.



C500 Hygienic Series
Available in Split, Heavy & Heavy-split versions.



Hygienic Accessories



Top cover Hygienic



Screw Hygienic



Nut Hygienic

Movex S.p.A.

Headquarters

Viale Industria, 22
24060 Castelli Calepio (BG)

Logistics Center

Via della Repubblica, 21/E
24060 Castelli Calepio (BG)

Phone +39 035 8359711

info@movexii.com

www.movexii.com

Follow us    

#MovexWorld

Movex worldwide

Movex GmbH

P +49-6204-9375-0
info.germany@movexii.com

Movex Brasil Ltda

P +55-15-3141-2550
info.brazil@movexii.com

Movex France

P +33-06-21-02-79-15
info.france@movexii.com

Movex UK Ltd.

P +44-77-20678442
info.uk@movexii.com

Movex Nederland

P +31-630-994850
info@movexii.com

Movex USA Inc.

P +1-877-401-5377
info.usa@movexii.com

Movex SA de CV

P +52-1-3318458187
info.mexico@movexii.com

Movex CIS Countries

P +39-348-7769760
info@movexii.com



Explore Eurobelt's product range:
high-quality plastic modular belts for
food and industrial conveying.

Discover more on www.eurobelt.com

Afher Eurobelt S.A.
P +34 983 217 480
afher@eurobelt.com

Eurobelt India
P +91-0-80 23718649
sales@eurobelt.co.in